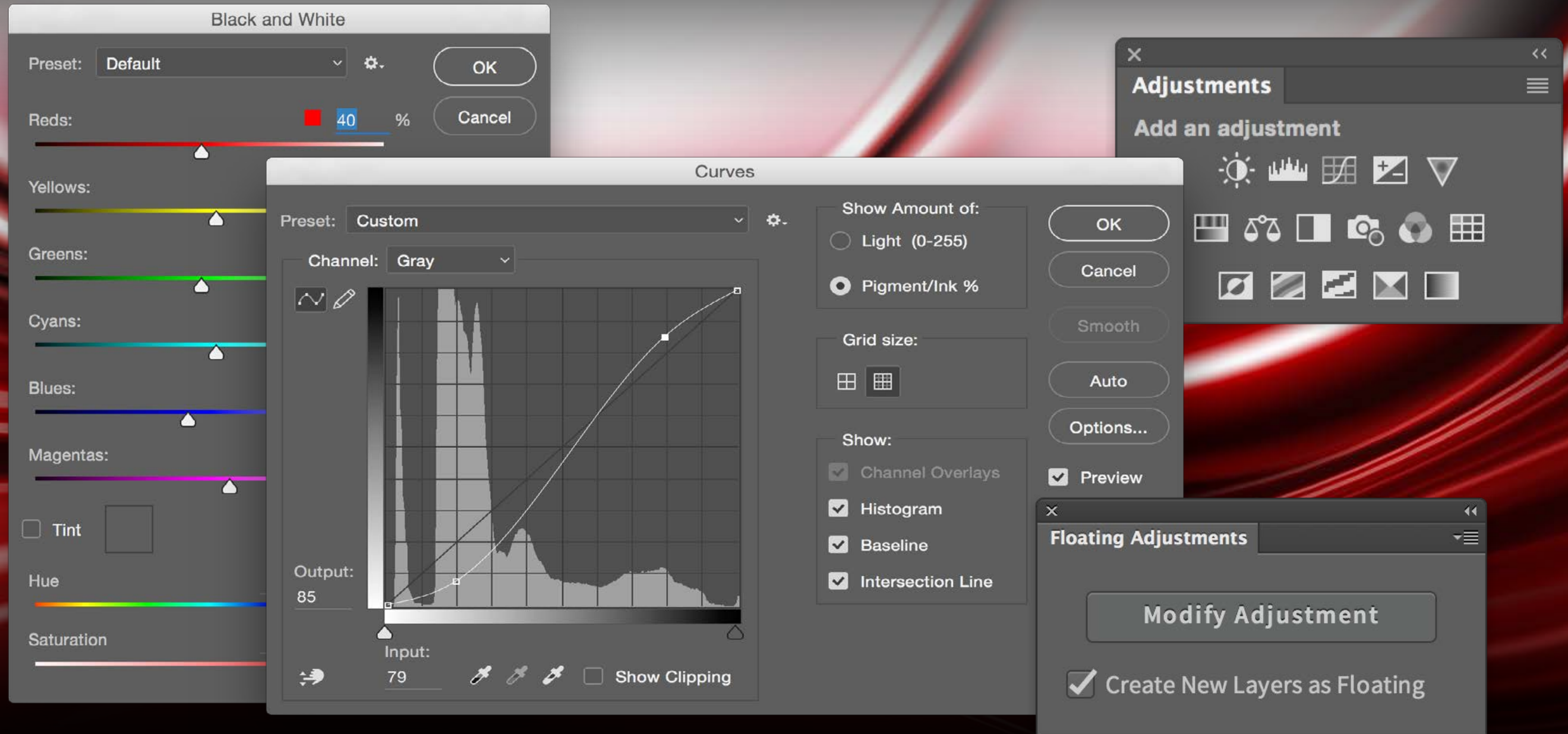




# KNOW HOW TRANSFER

the photography knowle



## Floating Adjustments | Restore the CS3 Style Floating Window

User Manual - Version 2.2.1 - February 2016



# KNOW HOW TRANSFER

the photography knowledge hub

## Know-How Transfer – The Photography Knowledge Hub

A new platform by the same team who developed ALCE, formerly RBG Group or Bigano and associates.

Everyone dealing with photography and digital imaging will find a unique mix of instructional and how-to content here. We offer applications specifically designed by photographers for photographers, as well as effective tutorials and free resources. Our mission is to create a community, a Central Hub of Photography Knowledge, where photographers can exchange experiences, share information and grow their skills. [Read more about our team here >](#)

Many of them come from the school of the great Dan Margulis and still have a very special relationship with him. I'm pleased to report here what he wrote about this group taken from his famous post "La Dolce Vita - An era ends":

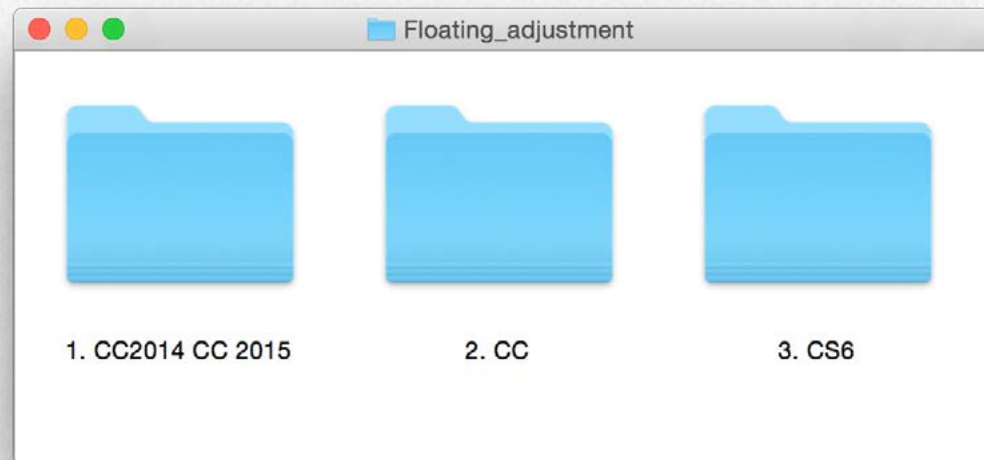
*They say that Italians get emotional at times like this, and that Italians love beautiful things. I admit to feeling a bit Italian myself as I write this. I \*have\* developed an emotional attachment to the country, no doubt. And the relationships I have entered into with several of my students in that country have evolved into something, well, profoundly loving. The old joke has it that in heaven, all lovers are Italian. Right off-hand I can think of a couple of exceptions to this generality, but there is no need to go off-topic. The truth is that it is a land of love and great beauty, made all the more beautiful professionally by seeing the new and sophisticated imaging algorithms being developed by Davide with Marco Olivotto, and by seeing how Alessandro, Daniele Di Stanio, Tiziano Fruet and others have brought first-class color instruction into a country where it was rarely found previously.*



# Install Floating Adjustments on CC 2015 and CC 2014

To install use the CC 2015 , CC2014 folder.

WIN users must copy the unzipped folder on the desktop and run Photoshop as an Administrator.



**Copy this folder**



com.cs-extensions.FloatingAdj



Macintosh HD/Library/Application Support/Adobe/CEP/extensions



C:\Program Files\Common Files\Adobe\CEP\extensions

**Then restart Photoshop**



# Install Floating Adjustments on CC and CS6 - MAC



**ADOBE EXTENSION MANAGER IS REQUIRED TO INSTALL**

*Each version of Photoshop requires his dedicated AEM version.*

*PS CC need AEM CC, PS CS6 need AEM CS6 etc*

Any version  
of Photoshop  
requires the  
dedicated  
installer  
and Adobe  
Extension  
Manager  
Version



## 1. Drag the .zxp file installer on the proper AEM icon

*Or select the file and "Open with" Adobe extension Manager*

## 2. Accept the "Extension Disclaimer"

*Now AEM will alert you that the "developer of the application" is unknown.*

*We know him. Dont worry, proceed and accept.*

## 3. Remove the previous version of Floating Adjustments

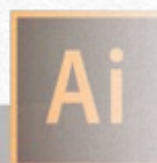
*Simply press on the "Remove" button in the AEM window*

## 4. Install

*AEM will alert you the reason why is that the verification system used by Adobe cause the expiration of the installed application. This means that without any apparent reason or notification your installed application will no longer work.*

## 5. Restart Photoshop

*Open VitaminBW from the Photoshop/Filter/VitaminBW 1.0.1 Menu*





# Install Floating Adjustments on CC and CS6 - WIN



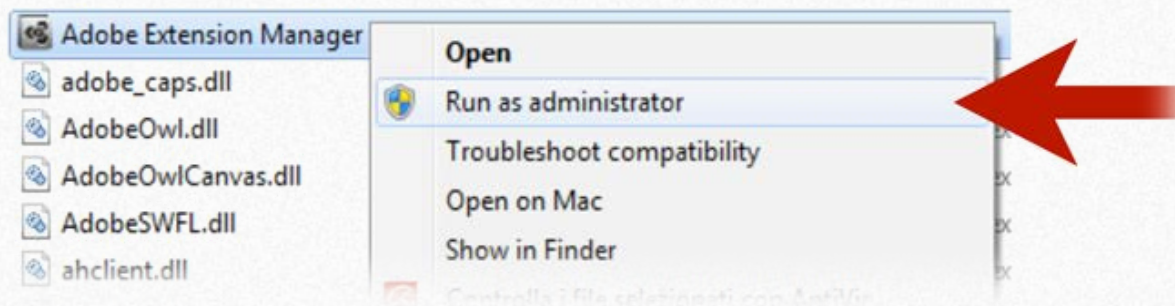
## ADOBE EXTENSION MANAGER IS REQUIRED TO INSTALL

*Each version of Photoshop requires his dedicated AEM version.*

*PS CC need AEM CC, PS CS6 need AEM CS6 etc*

**1. Unzip the Install Folder and copy its content on Desktop.**

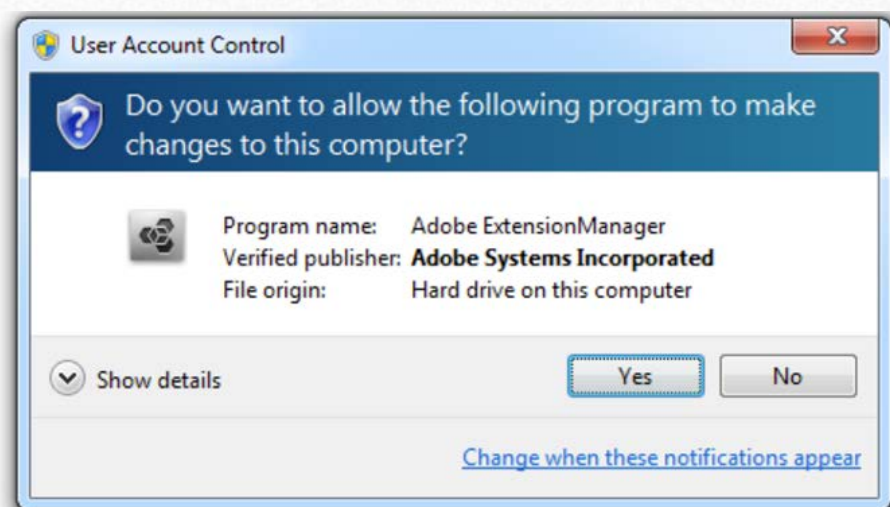
**2. Run Adobe Extension Manager as an Administrator**



**3. Insert you admin password and open AEM**

*Enter your administrator password if requested: Do it even if you're already logged as Administrator!*

*Select the proper .zxp file and "Open with" Adobe extension Manager.*



**4. Accept the "Extension Disclaimer"**

*Now AEM will alert you that the "developer of the application" is unknown. We know him. Dont worry; proceed and accept.*

*The reason of this alerts that the verification system used by Adobe cause the expiration of the installed application. This means that without any apparent reason or notification your installed application will no longer work.*



**6. In case, remove the previous version of Floating Adjustment**

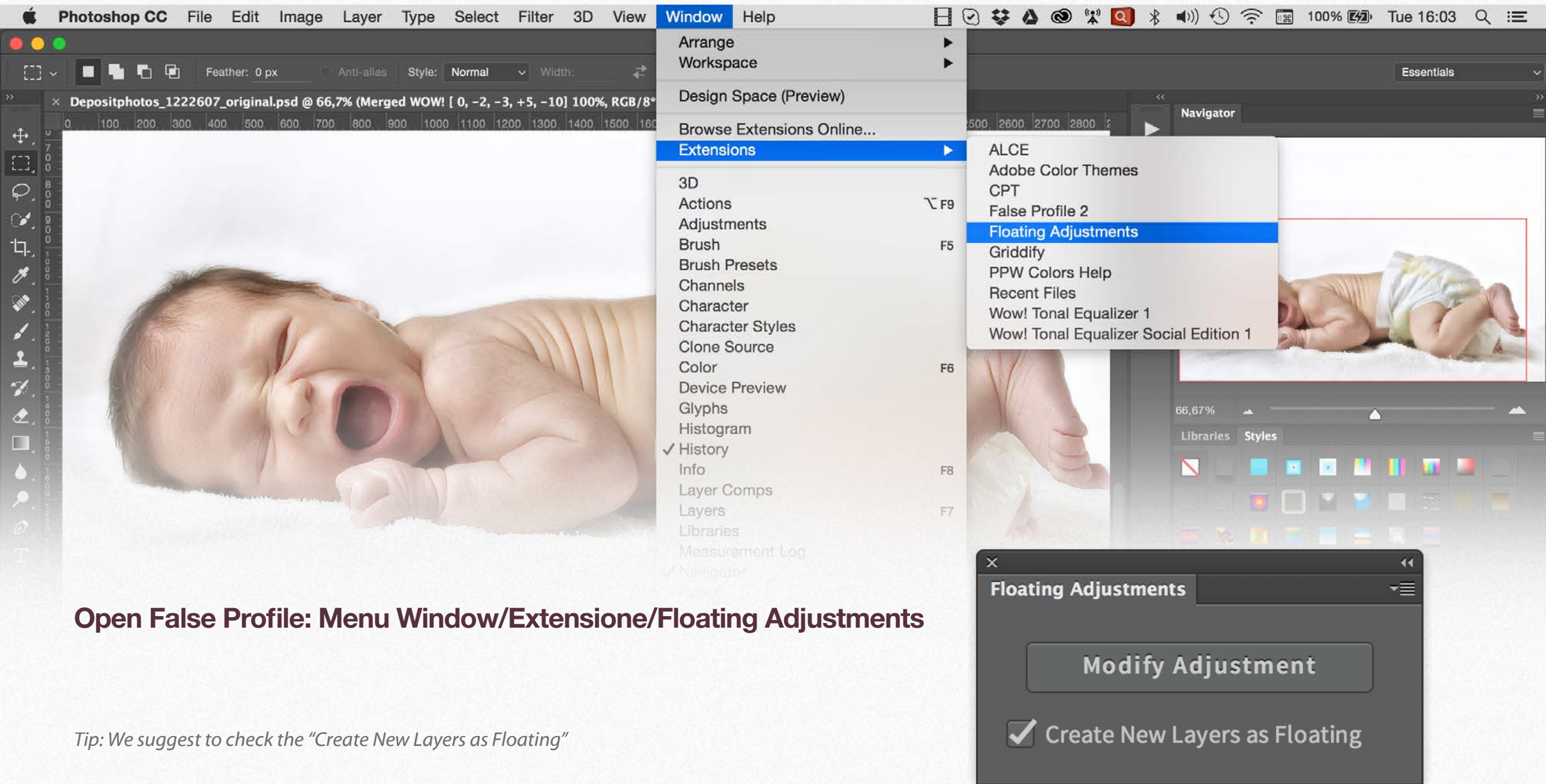
*Simply press on the "Remove" button in the AEM window*

**7. Restart Photoshop**

*Open False Profile from the Photoshop/Window/extensions menu*



# Where to find Floating Adjustments within Photoshop



**Open False Profile: Menu Window/Extensione/Floating Adjustments**

*Tip: We suggest to check the "Create New Layers as Floating"*

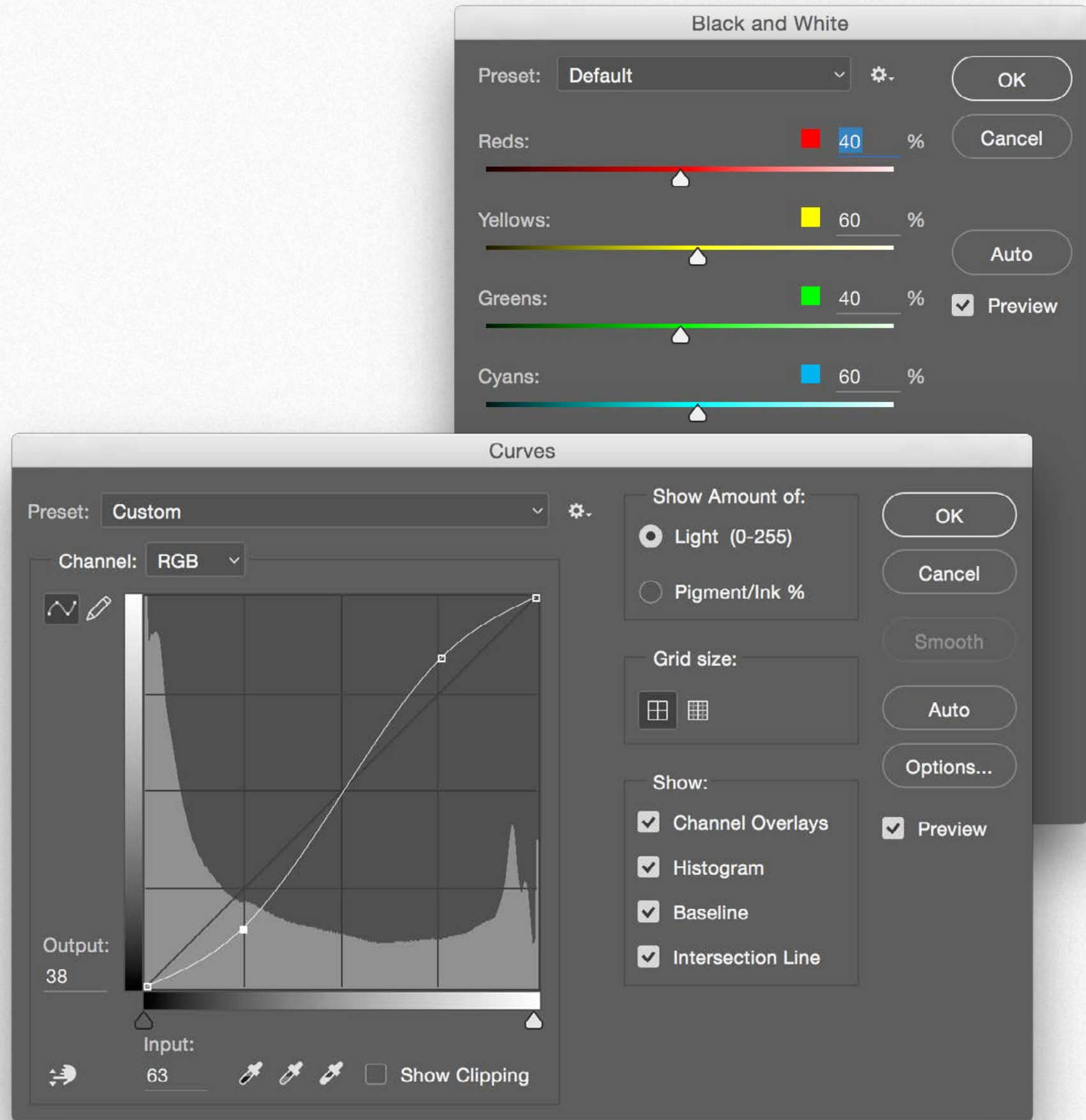
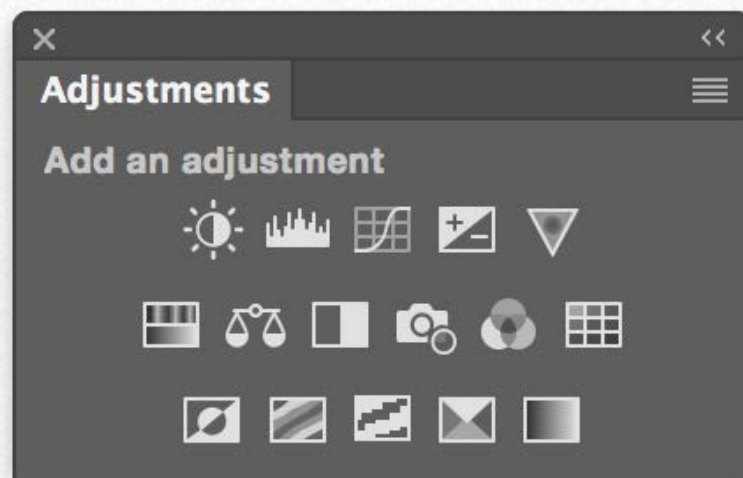


# The False Profile Interface

## 1. Big Floating Windows

A Photoshop panel that restores the Adjustment Layers' bigger, floating windows look and behaviour which was the norm back in CS3. It allows the creation of 15 Adjustment kinds as big, floating windows, and the modifications of existing Adjustments layers of any kind, even those not mentioned above always as floating windows.

Works with Curves, Levels, Exposure, Black&White, Brightness/Contrast, Cannel Mixer, Color Lookup, Hue/Saturation, Photo Filter, Posterize, Vibrance, Selective Color, Channel Mixer, Color Balance, Treshold, Gradient Map.





# KNOW HOW TRANSFER

the photography knowledge hub

## Links and Credits

False Profile © knowhowtransfer/bigano.srl/Davide Barranca  
False Profile is developed by Davide Barranca  
This manual is designed by Marco Diodato

**Floating Adjustments Page >**  
**Get Free Floating Adjustments here >**  
**Store Home Page >**  
**Products KHT Home Page >**  
**bigano.com >**



## 21. A brief presentation of our Apps for Photoshop.



*Wow! Tonal Equalizer - Frequency Separation Plugin*

Boost and soft an image in one step detail scales through five dedicated sliders. Positive values, which add detail or shape. Negative value remove detail and create great, soft transitions.

PS CC 2015, CC2014, CC, CS6 - MAC & WIN.

Buy €32 >



*Wow! Tonal Equalizer Social Edition*

A miniaturized version of Wow! with a re-designed algorithm with shorter range sliders and dedicated preset optimized for sizes from 800 to 1500 px. Works with files up to 1920x1920 px.

PS CC 2015, CC2014, CC - MAC & WIN.

Buy €13 >



*VitaminBW - Single and Triple Tone Black&White Converter*

An original approach to B&W Conversion with a very clean and simple interface. Simply press the "Single Tone" or the "Triple Tone" button to be quickly introduced to advanced conversion techniques.

PS CC 2015, CC2014, CC, CS6 - MAC & WIN.

Buy €28 >



*Double USM - Two Channels Advanced Sharpening*

Works separately on Dark and Light halo's components of an image. With a double set of sliders and his high quality preview, Double USM fills the gap. For traditional, HiRaLoam or creative mixed sharpening.

PS CC 2015, CC2014, CC, CS6, CS5 - MAC & WIN.

Buy €15 >



*ALCE - Advanced Local Contrast Enhancer*

An easy-to-use and powerful Photoshop tool to effectively improve and finely tune the local contrast of an image. His smart algorithm avoids the clipping issues typical of methods like shadows/highlights.

PS CC 2015, CC2014, CC, CS6, CS5, CS4, CS3 - MAC & WIN.

Buy €28 >



*Channels Power Tool - Advanced Mask Editing*

Easily get a preview of all available channels. Create masks from the channels. Use the powerful Apply Image option to precisely recover the details of your files. CPT will enhance your color control precision and productivity. PS CC 2015, CC2014, CC, CS6, CS5 - MAC & WIN.

Buy €24 >



# The Wow! Range. Classic, Social and Video Edition

Wow! is an exclusive Photoshop extension that improves your images with a exclusive combination of sharpening, shape and smoothing – we call this the “The Wow! Factor.” Wow! adds style, image sharpness and three-dimensionality together with incredibly smooth transitions. Use our easy presets with just one button, or take full control with the high quality live preview to add and remove details by tweaking our five dedicated sliders. **Now Available in Classic, Social and Video Edition for Adobe After Effects and Premiere Pro**

## Wow! Social Edition

For Photoshop

- **A Small Jewel For Web Sized Image**
- A miniaturized version of Wow! with a re-designed algorithm with shorter range sliders and dedicated preset optimized for sizes from 800 to 1500 px. **Works with files up to 1920×1920 px**

READ MORE

BUY €13

## Wow! Classic Edition

For Photoshop

- **The Classic Version for Photoshop**
- Our premium Frequency Separation Plugin with presets optimized for medium and high sized files. You can work in live preview or classic mode (set values and apply).

READ MORE

BUY €32

## Wow! Video Edition

For After Effects and Premiere Pro

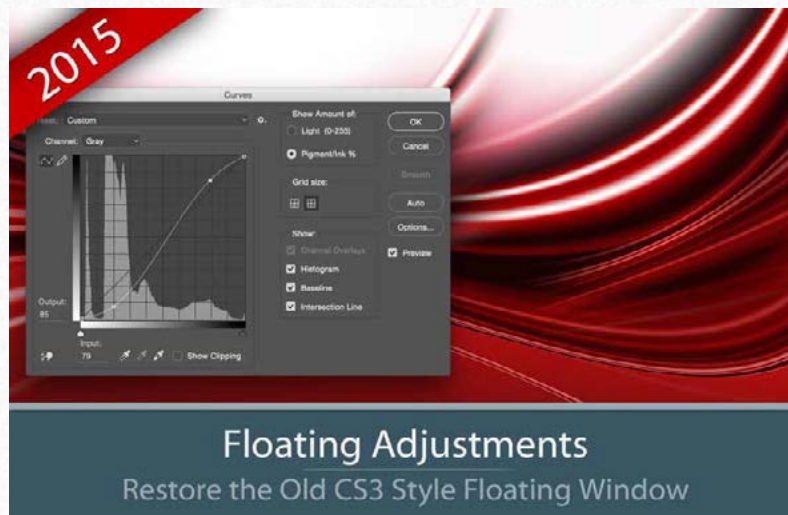
- **The Video Version**
- Works with the same powerful engine than Wow! Classic. Same ease of use and tuning effect. Generates an instant video preview and the export process his very fast.

READ MORE

BUY €32



## Freeware



### Floating Adjustments

Restore the Old CS3 Style Floating Window

*Floating Adjustments - Restores the old CS3 floating window*

Restores the Adjustment Layers' bigger, floating windows look and behaviour which was the norm back in CS3. It allows the creation of 10 Adjustment kinds as big, floating windows, and the modifications of existing adj.

PS cc 2015, CC2014, CC, CS6 - MAC & WIN.

[Get Free >](#)



### False Profile

Luminosity Control Using Gamma

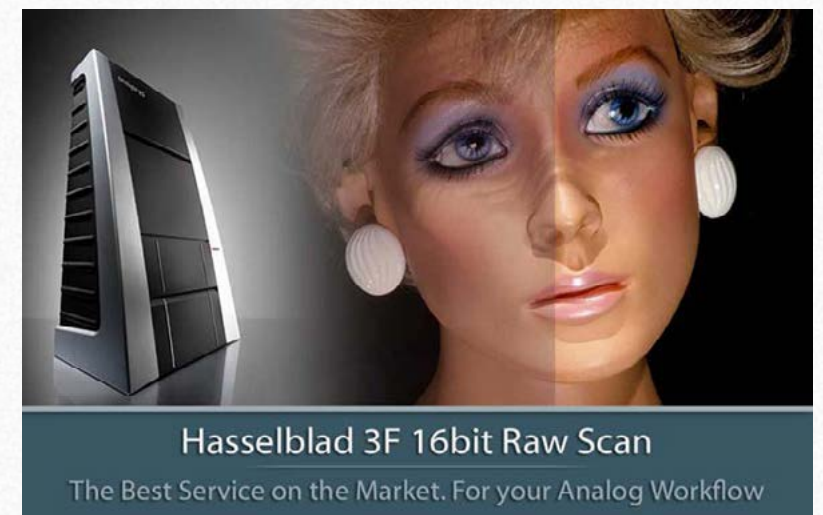
*False Profile - Tonal range control with low or high gamma*

A Photoshop extension to automate the assignment of false RGB profiles for a full control of the luminosity. Brings new features and refinements to the process of assigning false profiles. Works in conjunction with the Dan Margulis' PPW Tools.

PS CC 2015, CC2014, CC, CS6, CS5 - MAC & WIN.

[Get Free >](#)

## Premium Raw Scan Service



### Hasselblad 3F 16bit Raw Scan

The Best Service on the Market. For your Analog Workflow

*Hasselblad 3F 16bit Raw Scan Service*

3F is a raw file obtained from an analog original. We will scan your film with the Hasselblad hi-end scanners. Send us your originals from a 35mm to a 13x18cm/5x7", color or black and white, negative or positive. All PS Versions, MAC & WIN. Buy 3F 16 bit R

ALL PHOTOSHOP VERSIONS, MAC & WIN

[Buy Raw Scan €7 each.>](#)

[Apps Store >](#)

[Apps home page >](#)