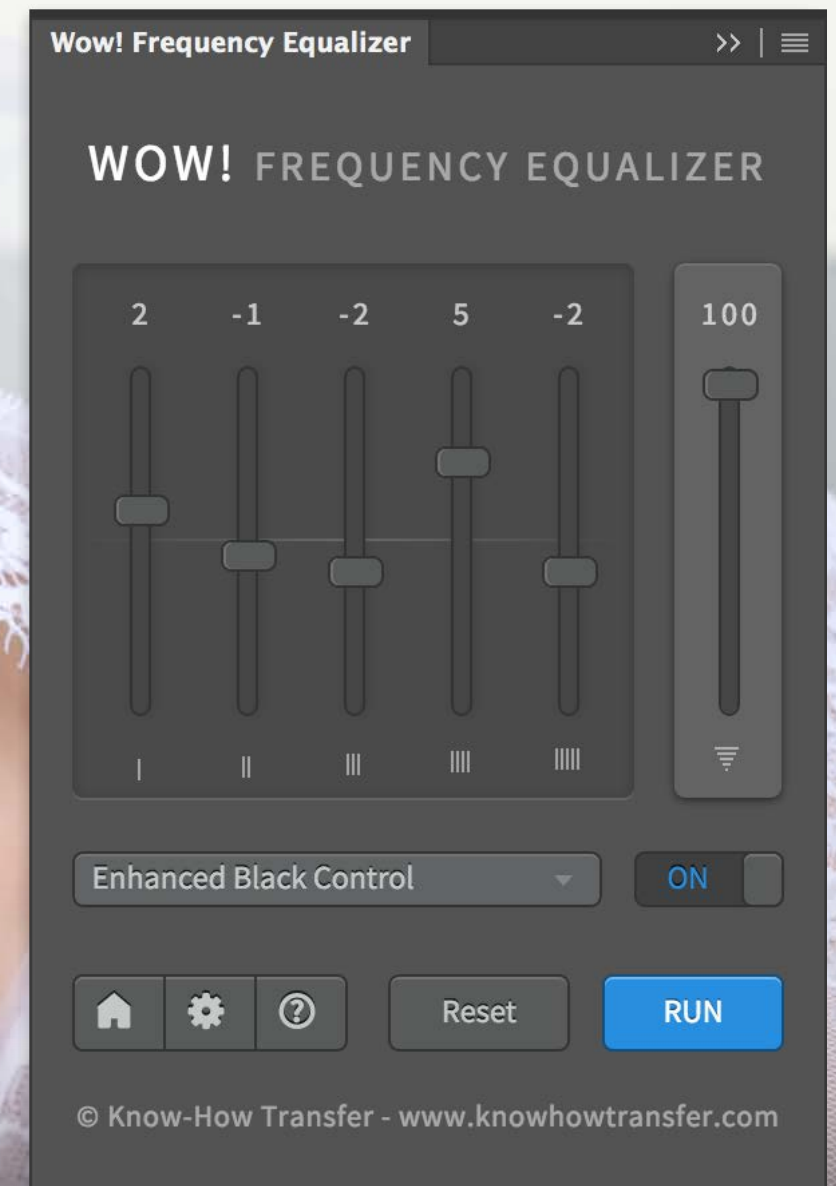


Watch Tutorials >



KNOW HOW TRANSFER  
the photography knowledge hub



Wow! Frequency Equalizer - Classic Edition

User Manual - Version 1.5.0 - August 2016



## 1. What's new in this release

We changed name to Wow! Frequency Equalizer and further improve the performance of the algorithm.

Wow! Frequency Equalizer is now the launch base to Wow! Pro for a very special upgrade price.





## 2. System Requirements and compatibility

- OS X 10.7 Lion and above
- Windows Vista and above (64 Bit)
- Photoshop CS6 and above

For further information on full **Wow! Range** visit the dedicated pages

**Wow! Frequency Equalizer range - home >**

**Wow! Frequency Equalizer Classic Edition >**

**Wow! Frequency Equalizer Pro Edition>**

**Wow! Frequency Equalizer Social Edition>**

**Wow! Frequency Equalizer Video Edition>**

**Problems? Go to the FAQ Page >**

or write to [support@knowhowtransfer.com](mailto:support@knowhowtransfer.com) >

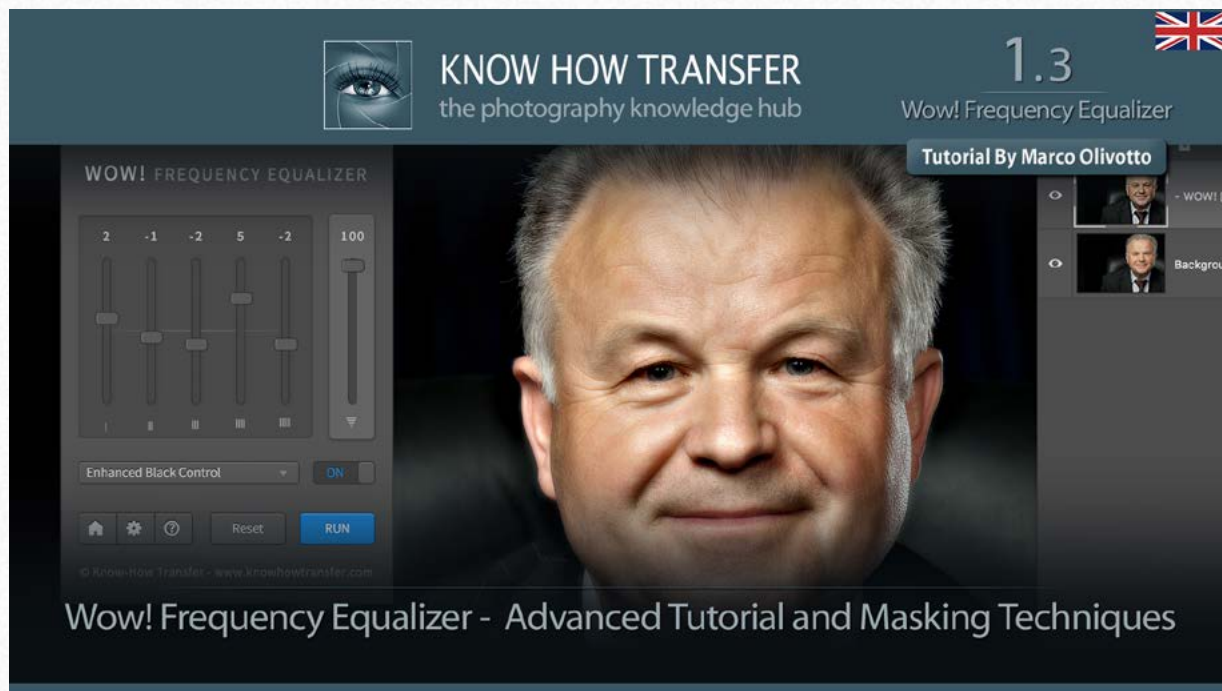
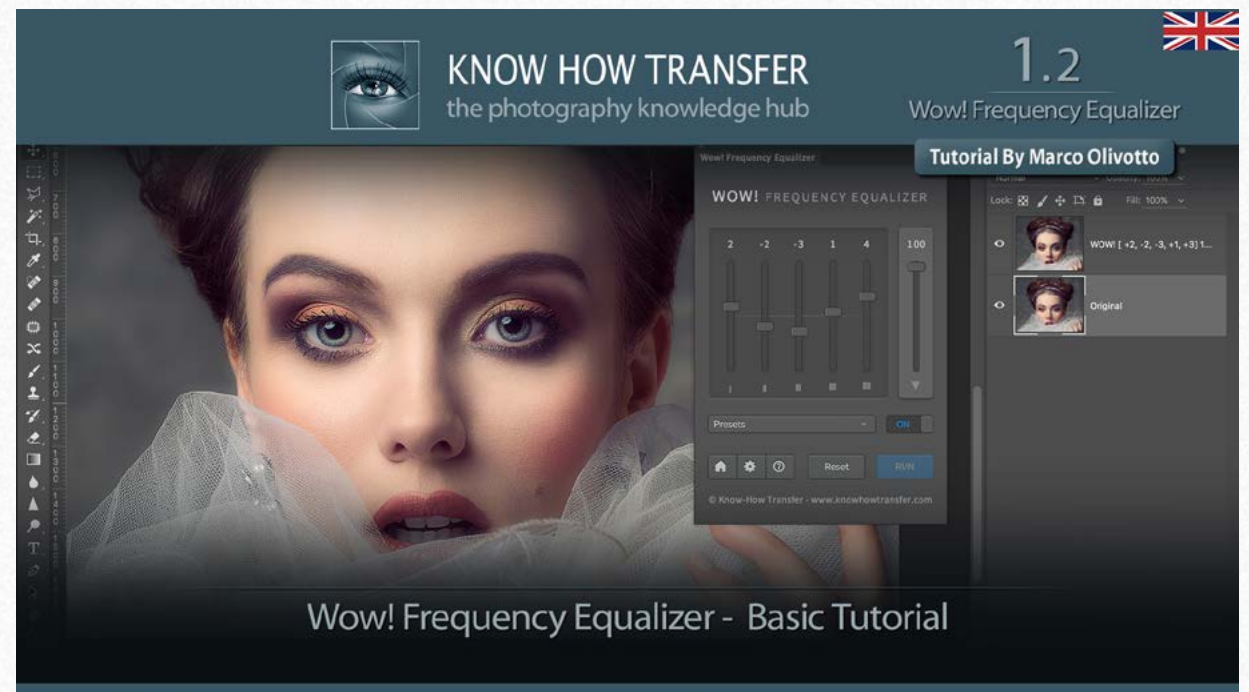
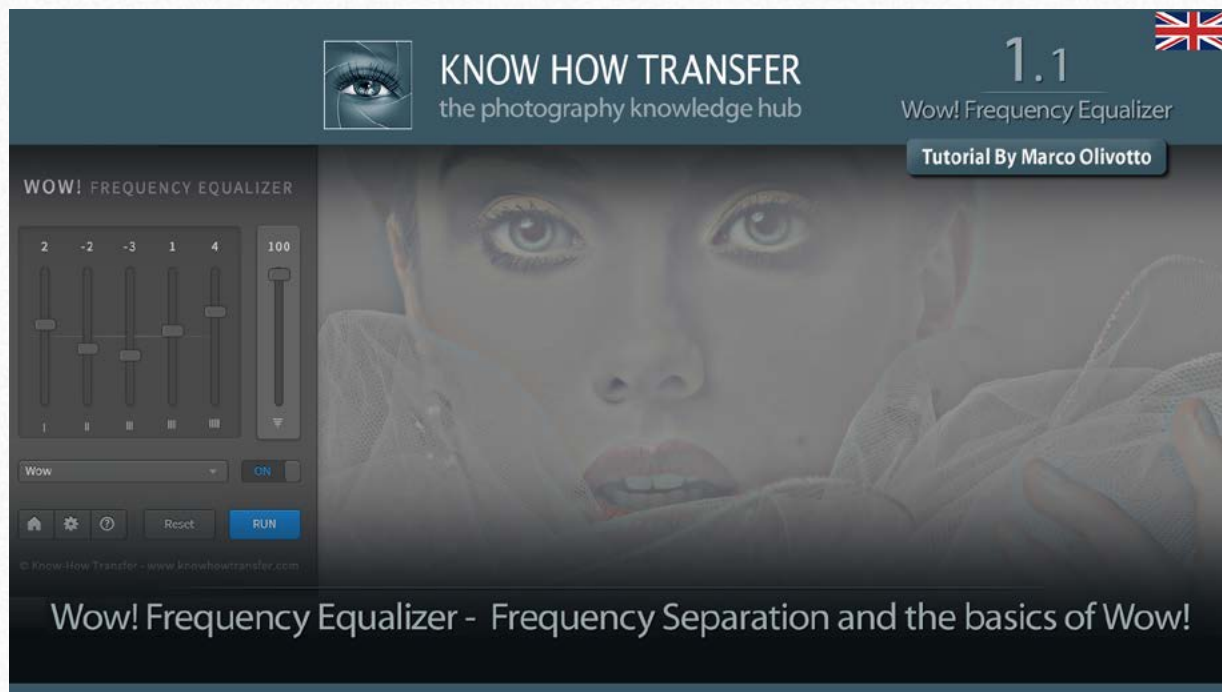




### 3. Video Tutorials

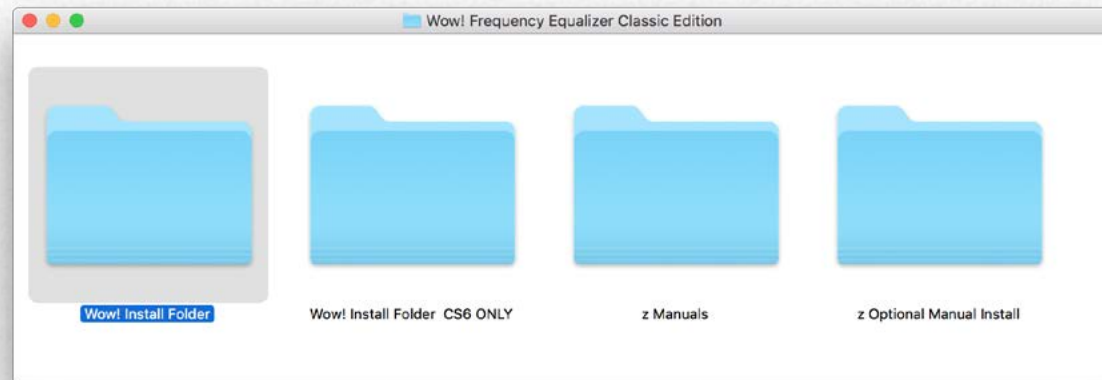
Click or tap on the images to watch the videos.

[Go to tutorials page >](#)





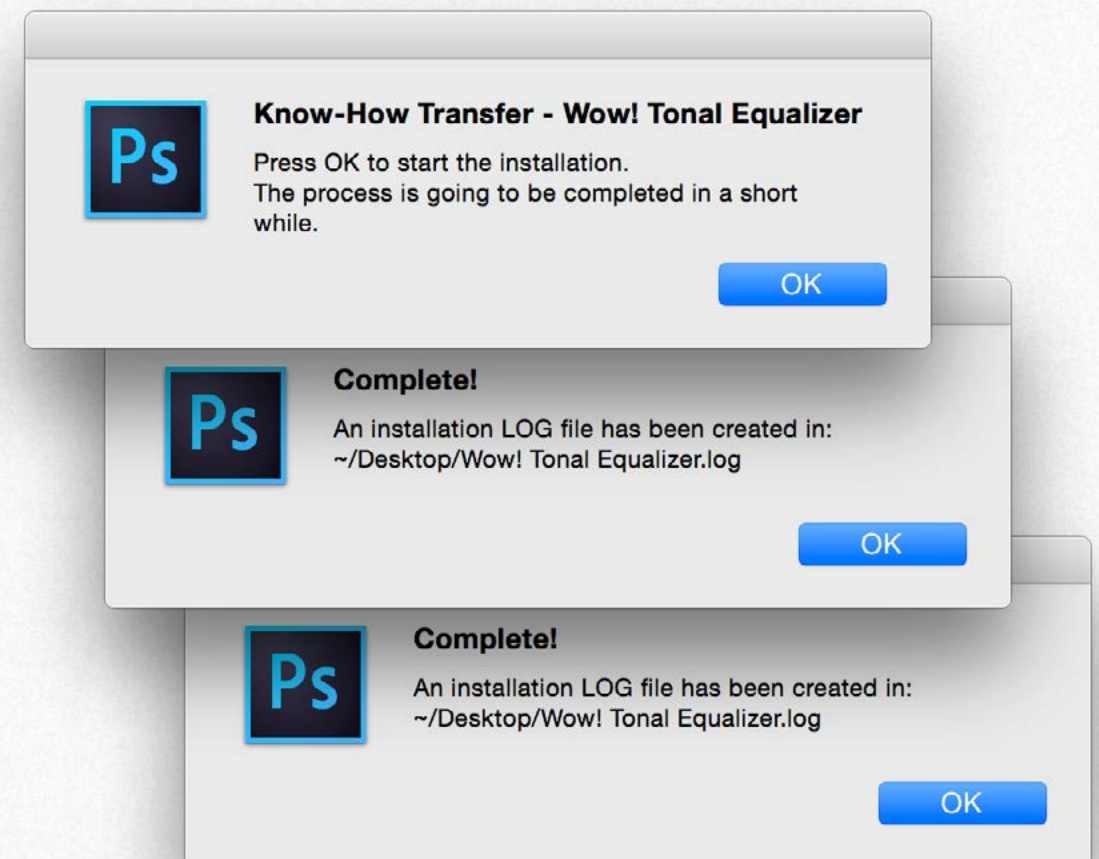
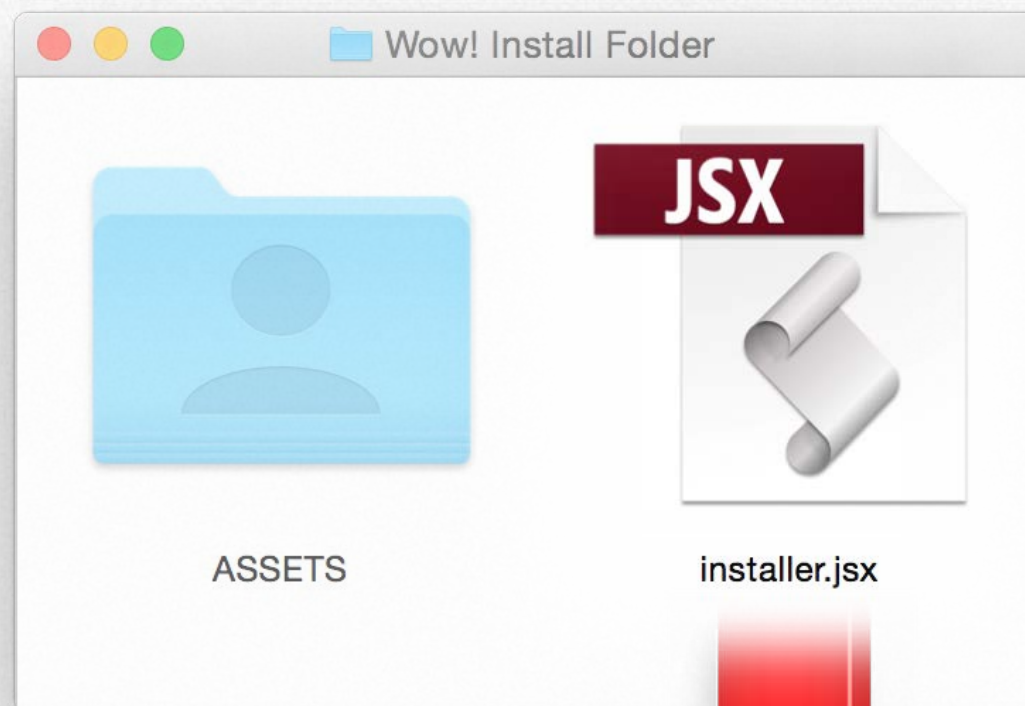
### 3a. Install Wow! - MAC



CS6 users use the “CS6 Install Folder”

**THE INSTALLER WILL AUTOMATICALLY UNINSTALL THE PREVIOUS VERSIONS OF WOW!**

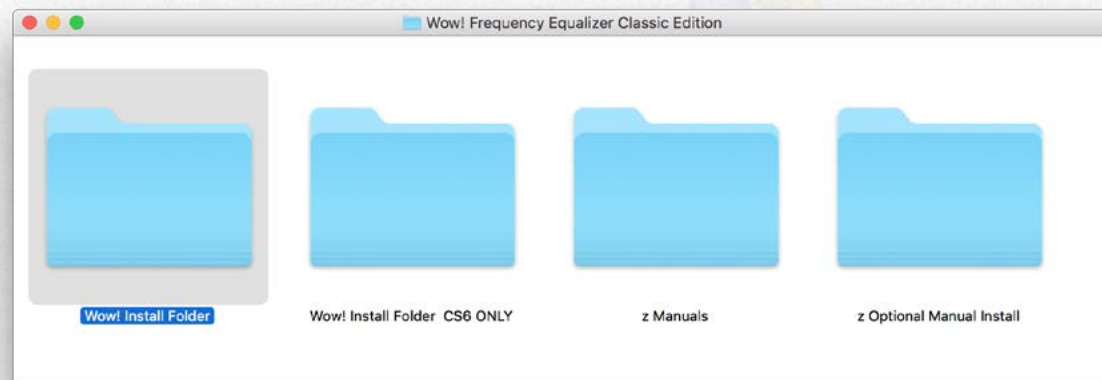
**1. Unzip the Install Folder - 2. Drag the Installer.jsx file onto the Photoshop icon - 3. Ok the 3 windows - 4. Restart Photoshop**



*Ok the three window to start the installation, process, save the install log and restart*

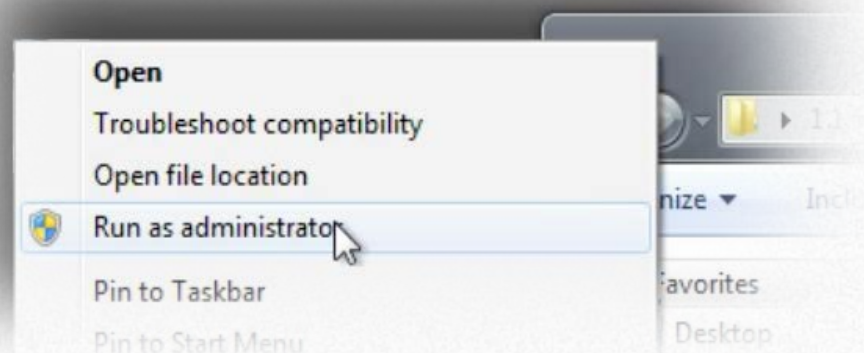


### 3b. Install Wow! - WIN

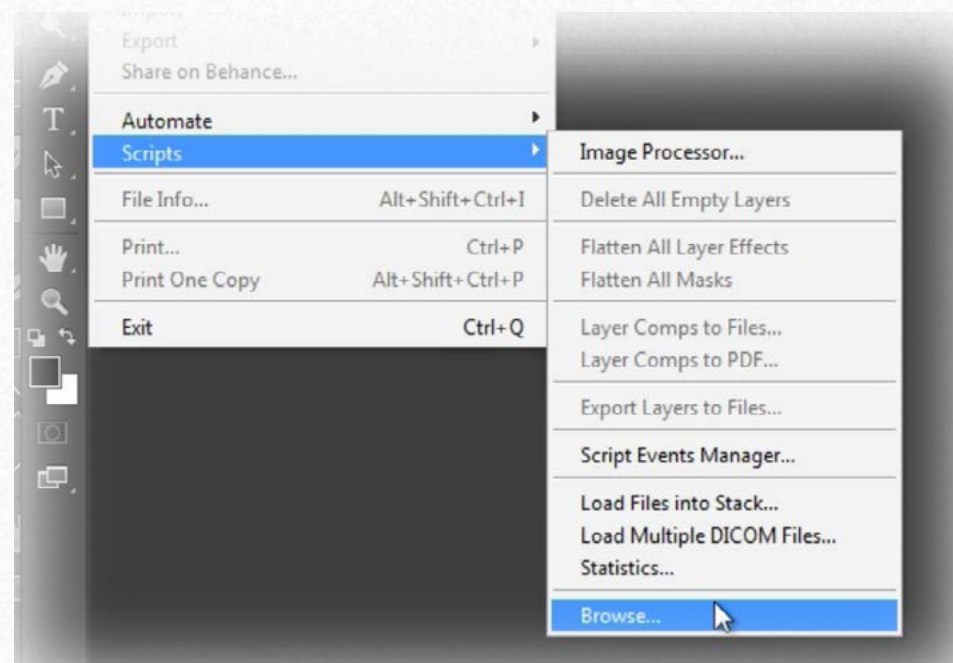


1. Unzip the Install Folder and copy its content on Desktop.

2. Run Photoshop as an Administrator



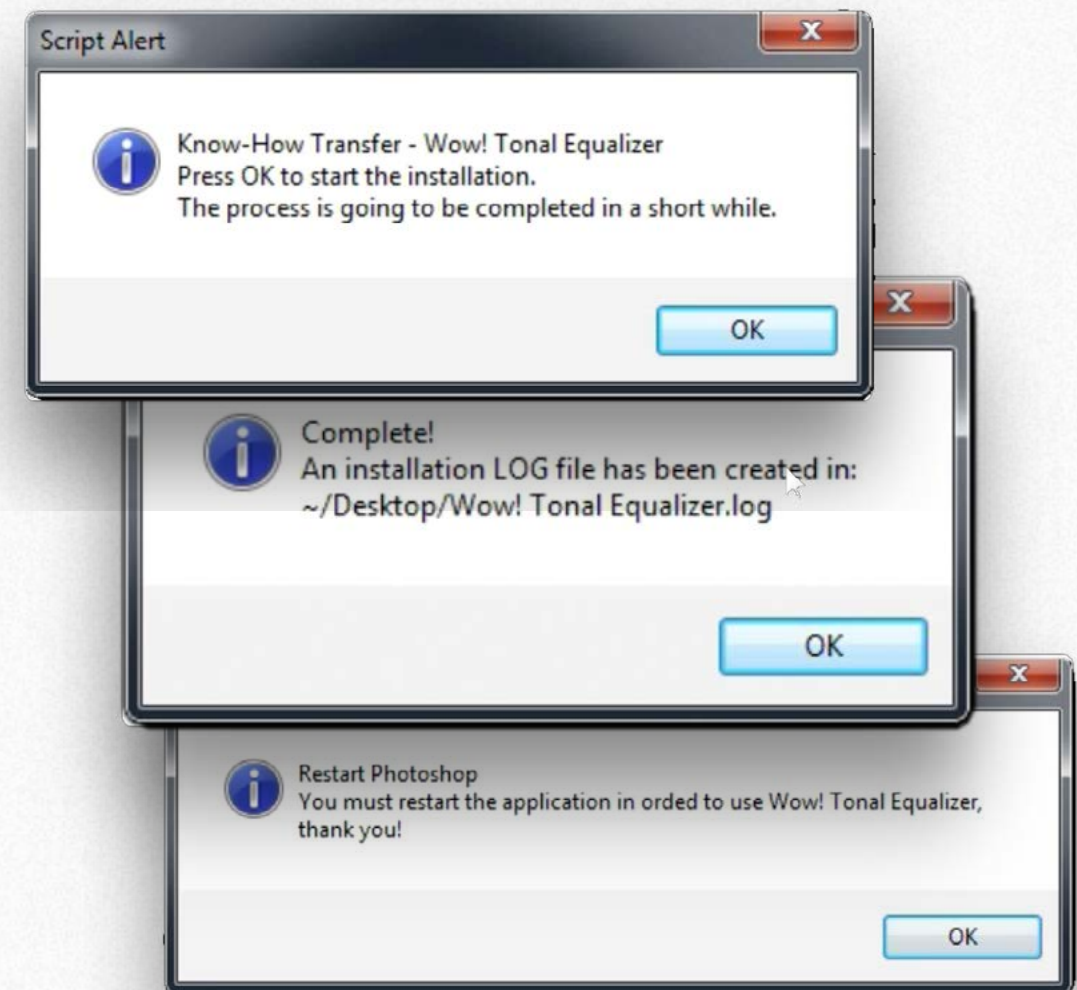
3. Through File -> Scripts -> Browse, open Installer.jsx



CS6 users use the “CS6 Install Folder”

THE INSTALLER WILL AUTOMATICALLY UNINSTALL THE PREVIOUS VERSIONS OF WOW!

4. Ok the 3 windows



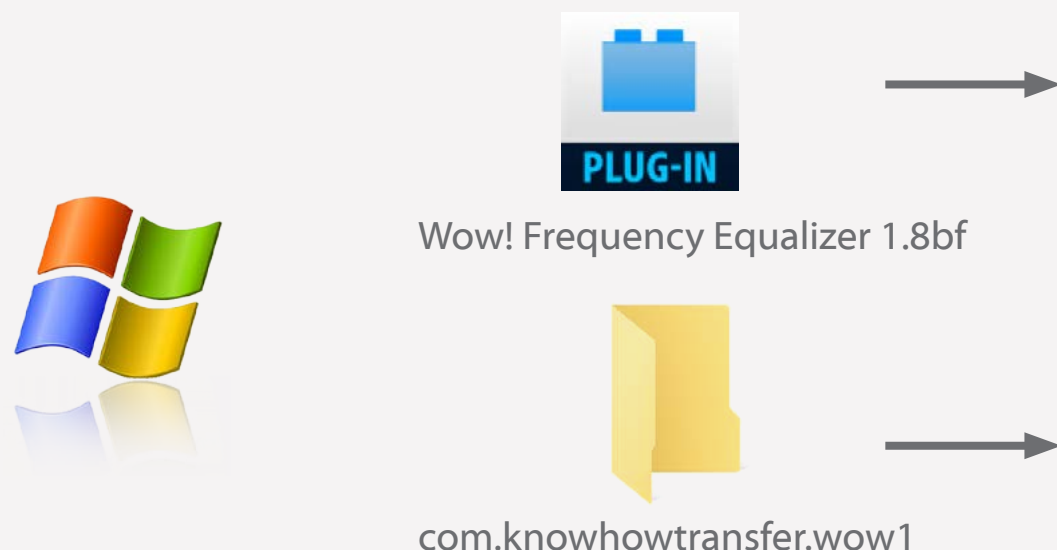
5. Restart Photoshop



### 3c. Optional Manual Install / CC and later

**Issues? Go to the FAQ Page >**

In case of problems with the main installer use the files stored in the folder "Optional Manual Install" (WIN or MAC version) folder. Copy the files in the locations as shown below. **Then restart Photoshop.**



CC - All versions  
Hard Drive\Program Files\Common Files\Adobe\Plug-Ins\CC

**You can copy the folder in the user library or the system library, as you prefer.**

#### **User library option**

CC 2015/2014 - 64 bit: C:\<username>\AppData\Roaming\Adobe\CEP\extensions

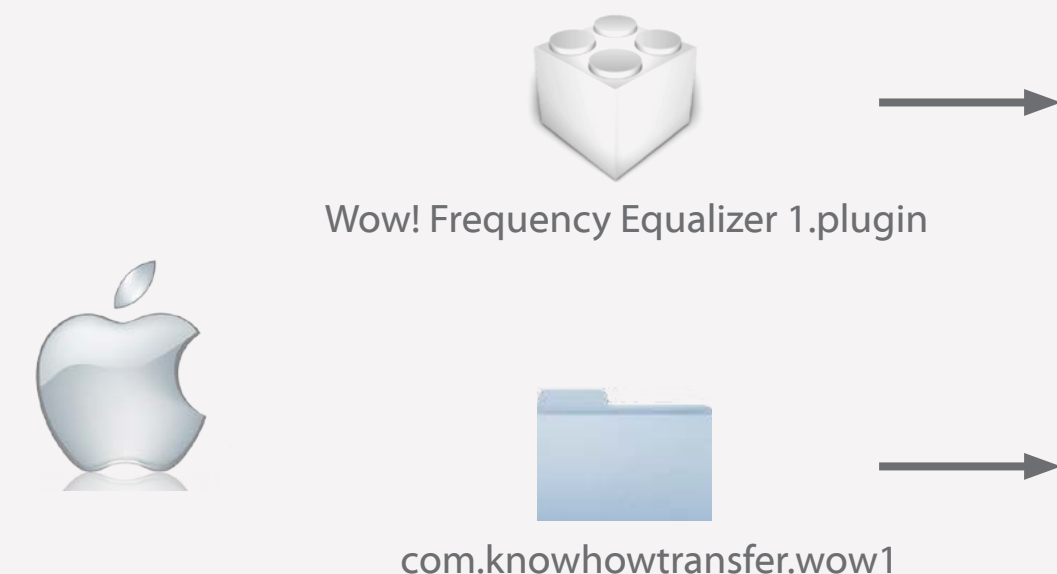
CC - 64 bit: C:\<username>\AppData\Roaming\Adobe\CEPServiceManager4\extensions

**The AppData folder by default is hidden. To reveal it search appdata or %appdata%**

#### **System library option**

CC 2015/2014- 64 bit: C:\Program Files (x86)\Common Files\Adobe\CEP\extensions\

CC - 64 bit: C:\Program Files (x86)\Common Files\Adobe\CEPServiceManager4\extensions\



CC - All versions  
/Library/Application Support/Adobe/Plug-Ins/CC

**You can copy the folder in the user library or the system library, as you prefer.**

#### **User library option**

CC 2014 and later: /Users/yourname/Library/Application Support/Adobe/CEP/extensions

CC: /Users/yourname/Library/Application Support/Adobe/CEPServiceManager4//extensions

**The user Library by default is hidden. To reveal it go to Finder/Go menu and press the ALT key.**

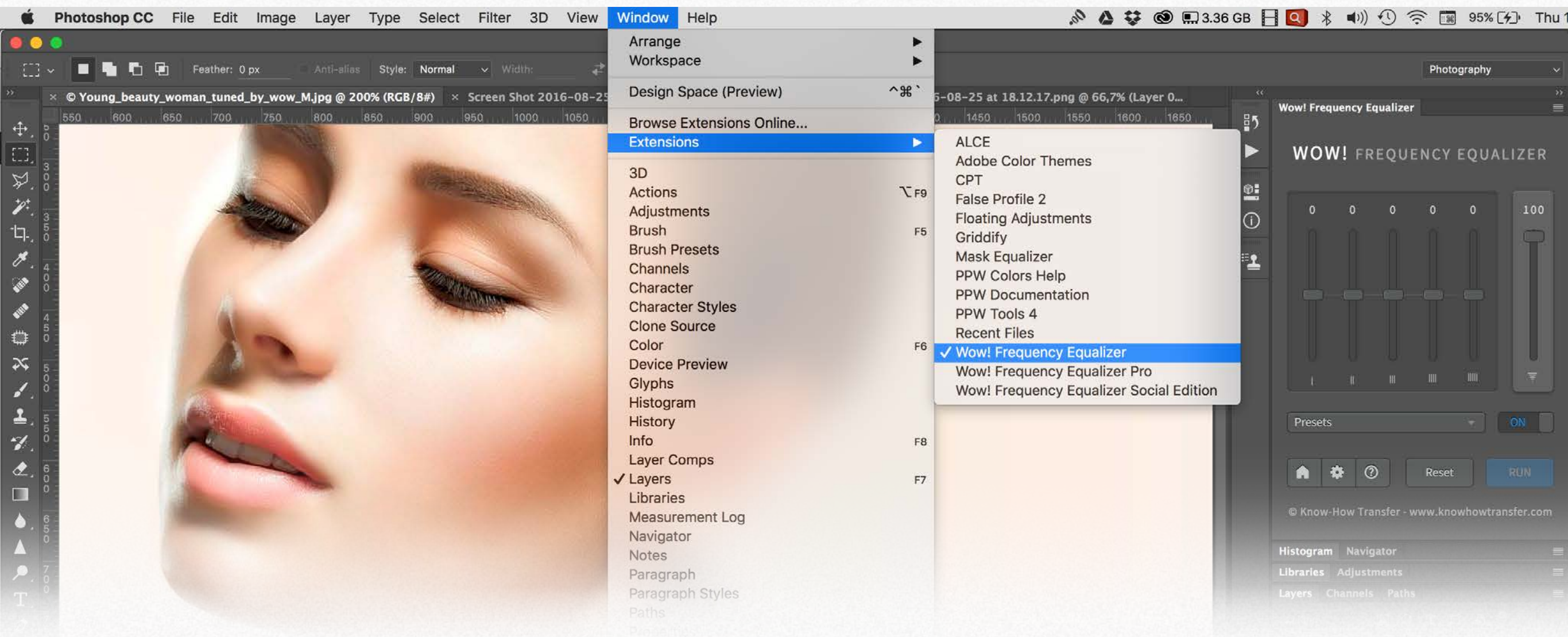
#### **System library option**

CC 2015 - CC2014: User Library/Application Support/Adobe/CEP/extensions

CC: User/Library/Application Support/Adobe/ CEPServiceManager4/extensions/



## 4a. Open Wow! in Photoshop CC - All Versions



### Open Wow!

Photoshop/Window/Estensions/WOW! Frequency Equalizer  
Use the panel floating, drag in the palette area or collapse it.

*Tip: If you have just installed the extension and don't see it,  
simply restart Photoshop.*



## 4b. Open Wow! Photoshop CS6

The screenshot shows the Adobe Photoshop CS6 interface. The 'Filter' menu is open, displaying various filter categories. The 'Wow! Tonal Equalizer 1.1' dialog box is open in the foreground, showing frequency sliders and a 'Run' button. The background image is a portrait of a woman's face.

**Open Wow! HERE**

Photoshop/Filters/WOW! Tonal Equalizer 1 Ui

**DO NOT open Wow! HERE**

Only for internal use

**Wow! Tonal Equalizer 1.1**

Presets: Skin ☒ Luminosity

☒ On/Off ? Cancel Run Close



## 5a. The Wow! Interface - CC Edition

### Equalizer Sliders

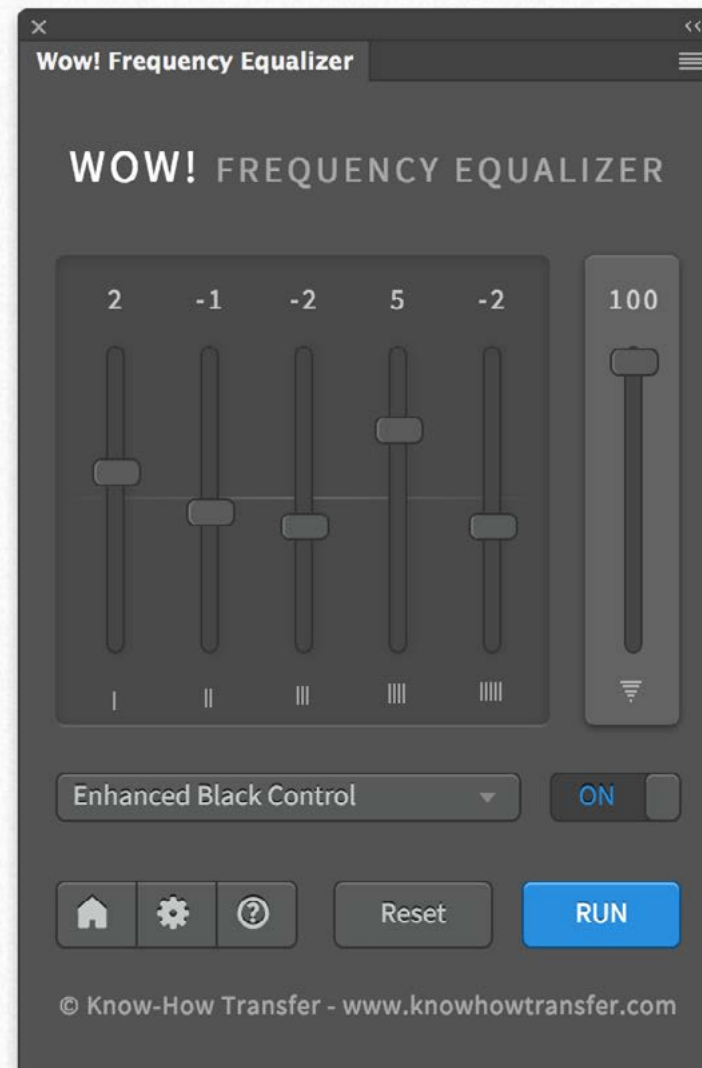
Wow! has five sliders. Moving them upward or downward will add contrast or soften the image.

Left to right:

1. High frequencies: with positive values, affects the thin details similarly to a classic 100.1.0 USM; the opposite with negative.
2. High/medium frequencies. Affects a bit larger areas. Often used as the first slider with negative values to soften the image.
3. Medium frequencies. Plays an important role sharpening, but more softening.
4. Medium low frequencies. Strongly affects the overall effect. Because of its structure it's mostly used in positive.
5. Low frequencies. Affects the largest areas. Often used with negative values to reduce the blacks depth.
6. Opacity slider. Used to reduce the effect if you are working on the background layer. By default it is set at 100%.

### Other Buttons

The "Home" button links to Wow! homepage. The "Preferences" button opens the prefs window. The "?" button displays the version release. Press "reset" to reset the sliders to 0.



### Live Preview On and Off

According to your work habits, file size and CPU performance you can set the live view on or off using the preference button. By default the live preview is set on off.

### Live Preview Off Mode

Wow! opens with the sliders set to 0. Once entered your custom values or selected a preset, press the RUN button to start Wow! and get the full screen preview. The preview is progressive. This means that if you change the values and RUN again, the new version will replace the previous. Press the button ON to see the before/after.

### Live Preview On Mode

Setting the preference to "live view" Wow! will update the preview any time you will move the sliders.

### Presets

You can try six presets: Wow, Gentle, Skin, Enhanced Black Controls Product, or Boost. designed for an average file size as Wow! is file size sensitive. This means that if you apply it to a 4000px wide file or to a 1000px one, the result will be very different. Read the preset section for more info.



## 5b. The Wow! Interface - CS6 Edition

### Equalizer Sliders

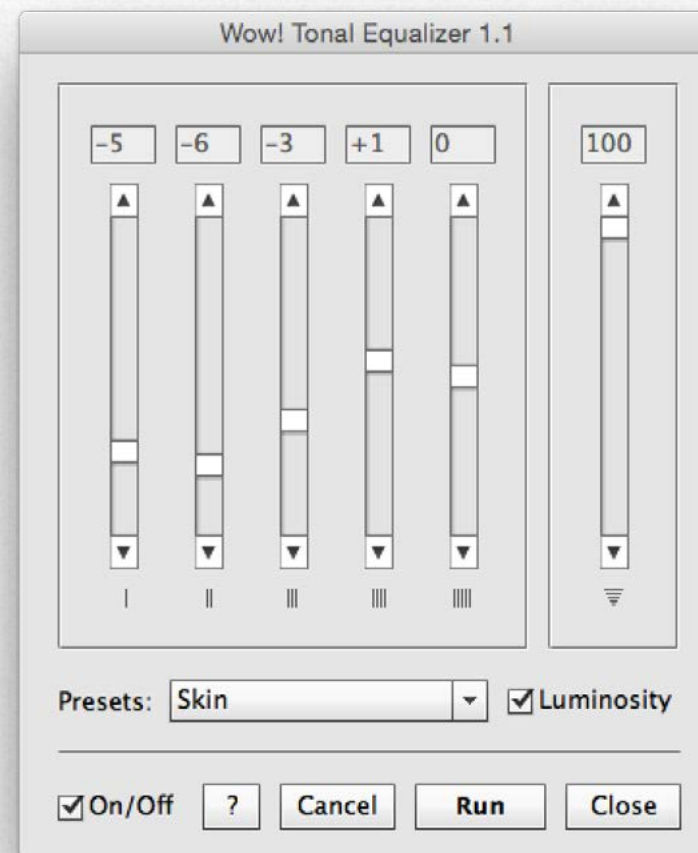
Wow! has five sliders. Moving them upward or downward will add contrast or soften the image.

Left to right:

1. High frequencies: with positive values, affects the thin details similarly to a classic 100.1.0 USM; the opposite with negative.
2. High/medium frequencies. Affects a bit larger areas. Often used as the first slider with negative values to soften the image.
3. Medium frequencies. Plays an important role sharpening, but more softening.
4. Medium low frequencies. Strongly affects the overall effect. Because of its structure it's mostly used in positive.
5. Low frequencies. Affects the largest areas. Often used with negative values to reduce the blacks depth.
6. Opacity slider. Used to reduce the effect if you are working on the background layer. By default it is set at 100%.

### Presets

You can try six presets: Wow, Gentle, Skin, Enhanced Black Controls Product, or Boost.. Please read the preset section to get more info.



### Preview

Wow! opens with all the sliders set to 0. Once entered your custom values or select a preset, press the RUN button to perform Wow! and get the full screen preview. If you change the values and RUN again, the previous version will be replaced by the new one. Press the button ON to see the before/after.

### Luminosity

By default Wow! works in luminosity mode. Uncheck it to work in normal mode.

### ?

Visit the Wow! page.

### On/Off

Switch before/after

### Cancel

Reset the sliders or cancel the Wow! version

### Run

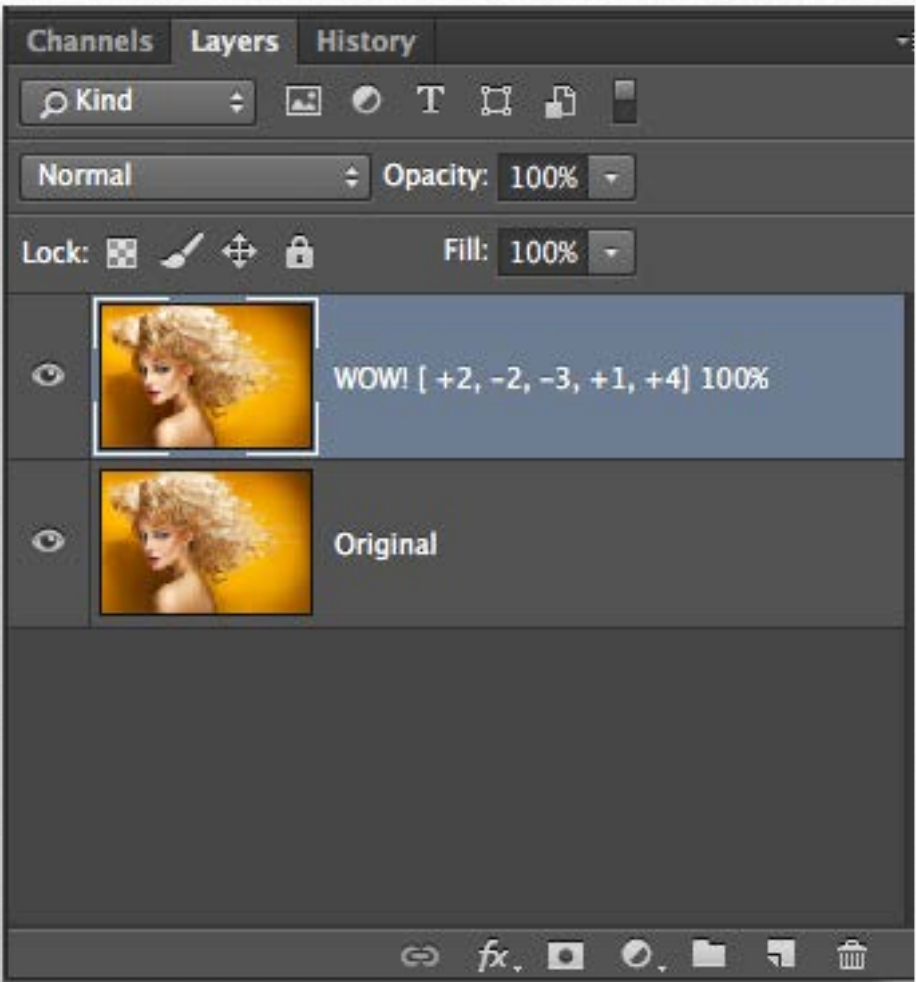
Run Wow!

### Close

Close Wow!



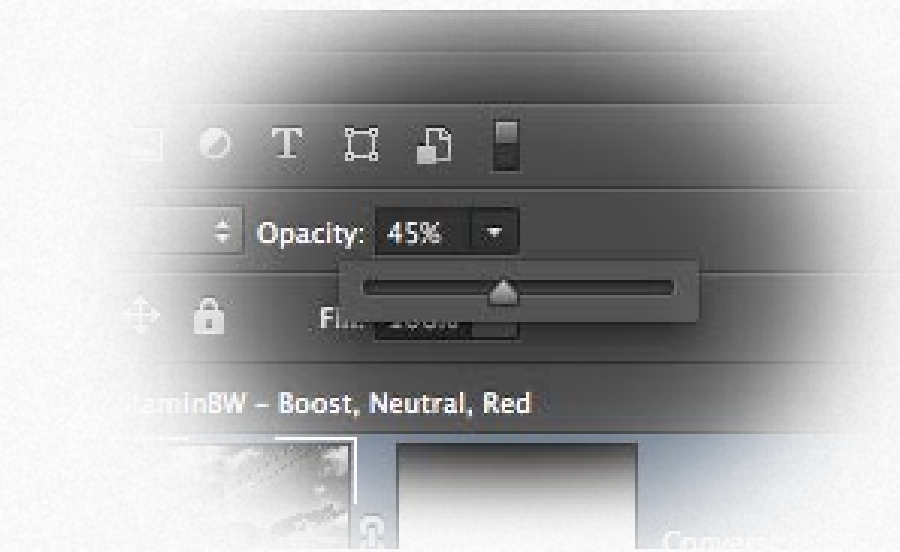
# 6a. Use Wow! in Standard Mode (Live Preview off)



To apply Wow! choose a preset or enter your custom values then press RUN. Inspect the result and if necessary tweak some sliders and RUN again. Wow! will be applied on the original layer.

If you like the result but the effect is too strong you can reduce the opacity value with the slider on the right of the panel and run again. This make sense if you are working directly on the background. However we suggest that you work on a duplicate layer as shown on the left.

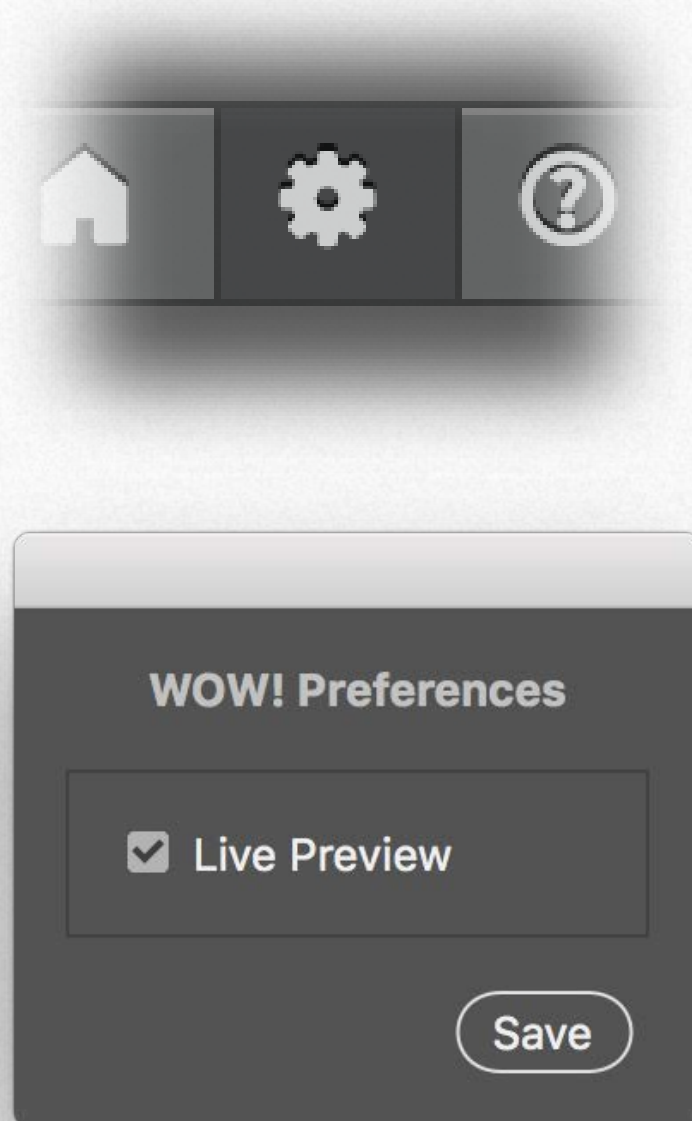
In this case Wow! was set at 100% opacity. Eventually we rwill tweak the effect later by adjusting the opacity of the layer as shown on the left.



Tip: You can reduce the strength of the contrast by reducing or increasing opacity. You can do this only if you apply Wow! on a duplicate layer.



## 6b. Use Wow! in Live Preview Mode (Not available in CS6)

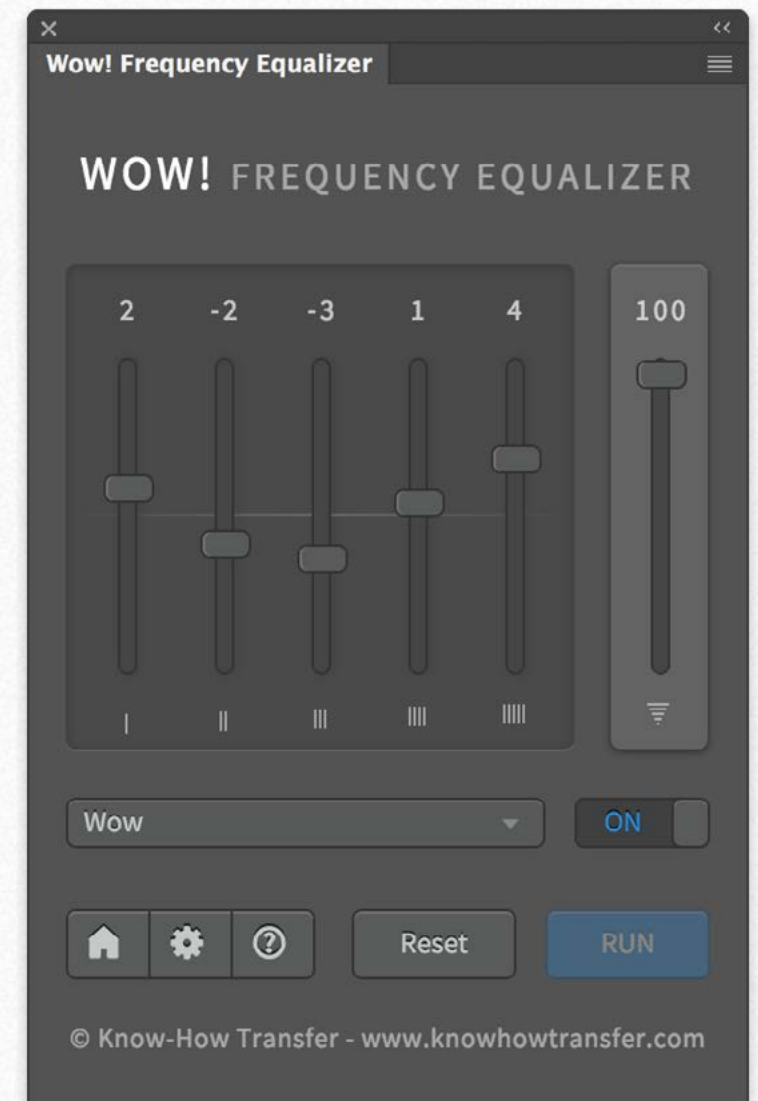


### A New Faster Algorithm

Now Wow! is approximately three times faster than the previous version and you can prefer to work with the live preview. This means that any time you move the slider the preview is updated.

To enable Live Preview press the preferences tab, check "Live Preview" and save.

The Run Tab is now inactive.





## 7. How to get the most out of Wow! Tonal Equalizer

We strongly recommend you start using Wow! as described below.

Step1. Carefully read this manual.

Step2. Use some of your standard files as a test.

Step3. Apply Wow! using the presets.

Step4. Duplicate the background layers changing some sliders, especially the 1, 4 and 5 and compare them.

Step5. Apply the same values on the same original at different sizes to understand how the file size may affect the result.

Well! At this point you will be ready to explore all the potentials of Wow!

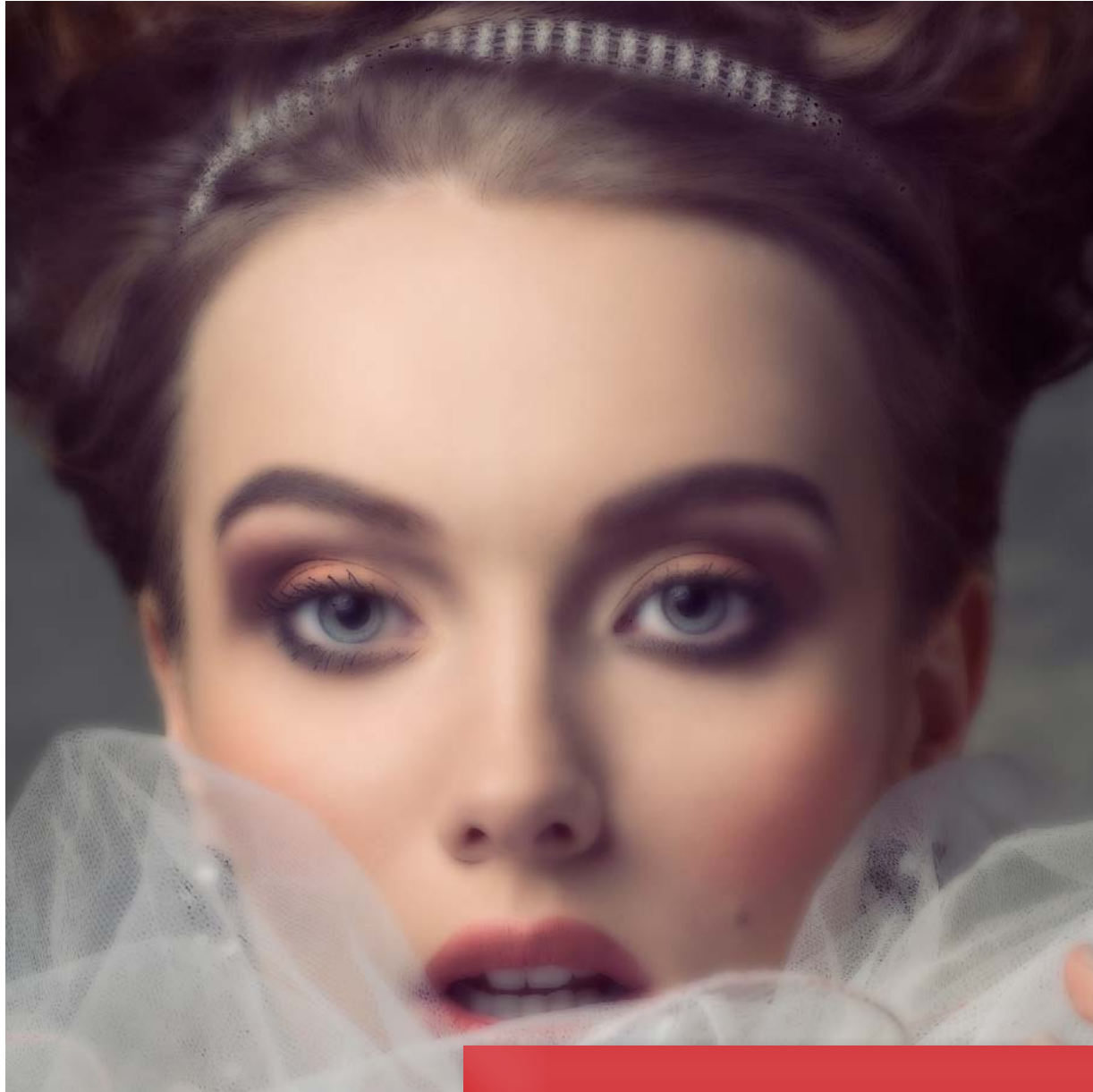
*Tips: a recommendation about the export of your color files. Don't push contrast, clarity and USM. Wow! will manage all this parameters. Wow! will do it better.*





## 8. What is Spatial Frequency Separation. The Basics of Wow!

Usually one encounters spatial frequency separation for the first time in the field of beauty retouch, but this technique is much more versatile. To put it as easily as possible, it is a technique which **separates the texture of an image from its shape** creating two “virtual” layers, one storing color and luminosity information and the other one, with a very strange look, storing the detail. Read the next pages or watch the video.



[Watch Frequency Separation Video](#)



## A brief presentation of our Apps for Photoshop.



*Wow! Frequency Equalizer Classic Edition*

*Boost and soft an image in one step detail scales through five dedicated sliders. Positive values, which add detail or shape. Negative value remove detail and create great, soft transitions.*

PS CC 2015, CC2014, CC, CS6 - MAC & WIN.

Buy €30 >



Wow! Frequency Equalizer Pro Edition

*Same features of Wow! Classic plus the new Decomposition button. You can now turn each frequency into its own pixel layer for a better and more precise frequency based retouching.*

PS CC and above - MAC & WIN.

Buy 40>



### VitaminBW - Single and Triple Tone Black&White Converter

*An original approach to B&W Conversion with a very clean and simple interface. Simply press the "Single Tone" or the "Triple Tone" button to be quickly introduced to advanced conversion techniques.*

PS CS6 and above - MAC & WIN.

Buy €28 >

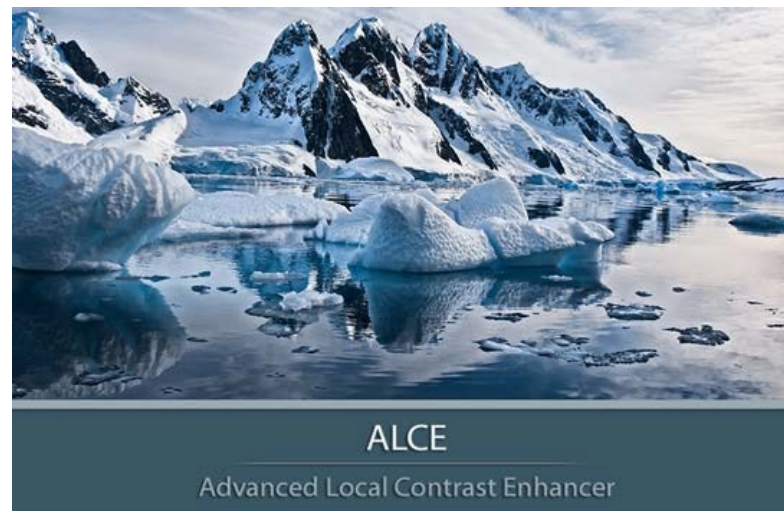


### Double USM - Two Channels Advanced Sharpening

*Works separately on Dark and Light halo's components of an image. With a double set of sliders and his high quality preview, Double USM fills the gap. For traditional, HiRaLoam or creative mixed sharpening.*

PS C5 and above - MAC & WIN.

Buy €15 >



### ALCE - Advanced Local Contrast Enhancer

*An easy-to-use and powerful Photoshop tool to effectively improve and finely tune the local contrast of an image. His smart algorithm avoids the clipping issues typical of methods like shadows/highlights.*

PS C53 and above - MAC & WIN.

Buy €28 >



## Channels Power Tool - Advanced Mask Editing

Easily get a preview or create masks out of all available channels. Use the powerful Apply Image option to precisely recover the details of your files. CPT will enhance your color control precision and productivity. PS CS5 and Above - MAC & WIN. **Buy €24>**

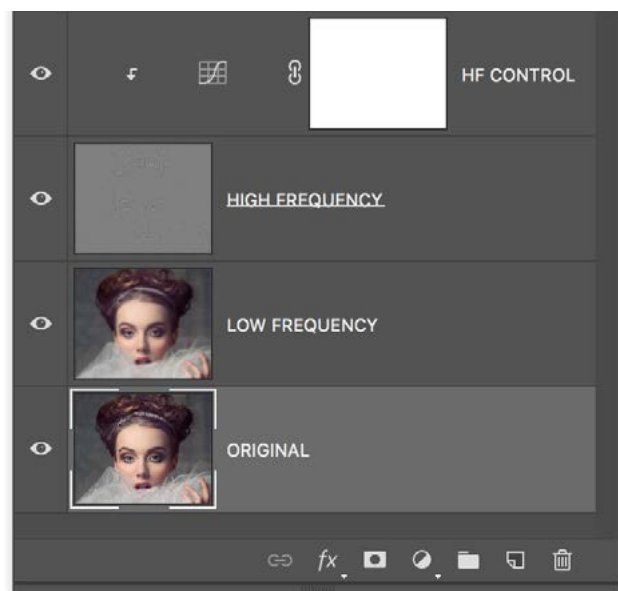
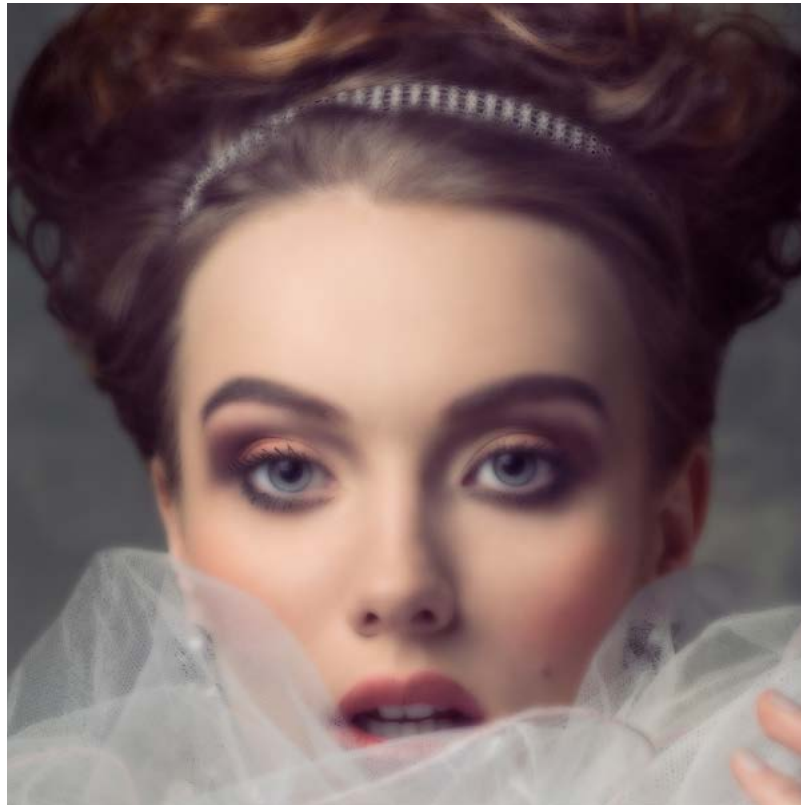
Buy €24>



If you want better understand how Wow! works read these three pages or skip them and proceed.

We have seen that basically on a given frequency two layers are created: a LOW FREQUENCY layer (blurred) and an HIGH REQUENCY layer (detail). The two layers together are exactly the same of the original. So, why create this two layers?

The reason is that **increasing or decreasing the contrast of the detail layer the image become sharper or smoother.**



Left to right the original, the low frequency layer that looks blurred then a strange image that contains the detail.

On the left the stack of the two layers, plus an HQ control curve clipped to the detail layer.

The two layers together create an image that is exactly like the original.

With this setting, a curve with less contrast smooths the image, with more contrast sharpens it.

Go to the next page to read more.

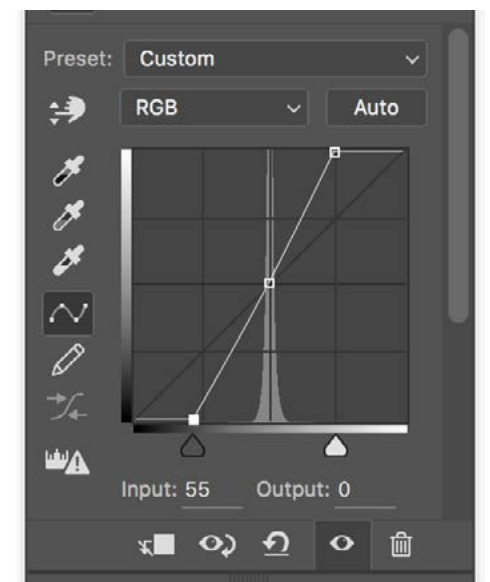
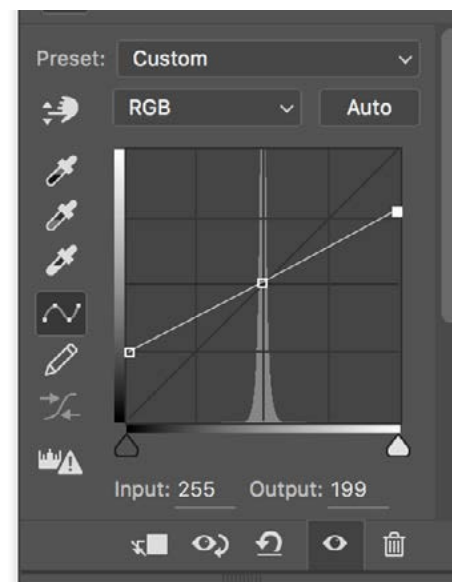
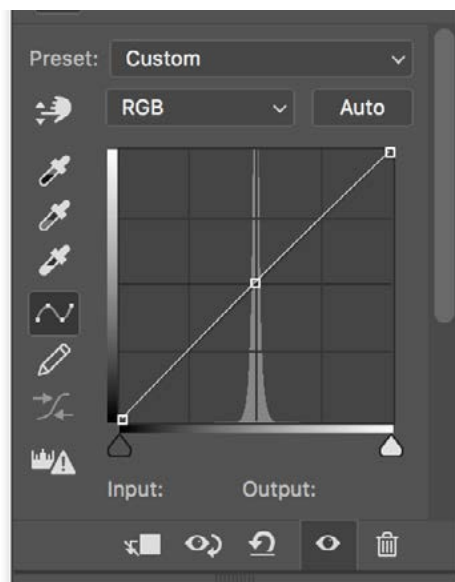
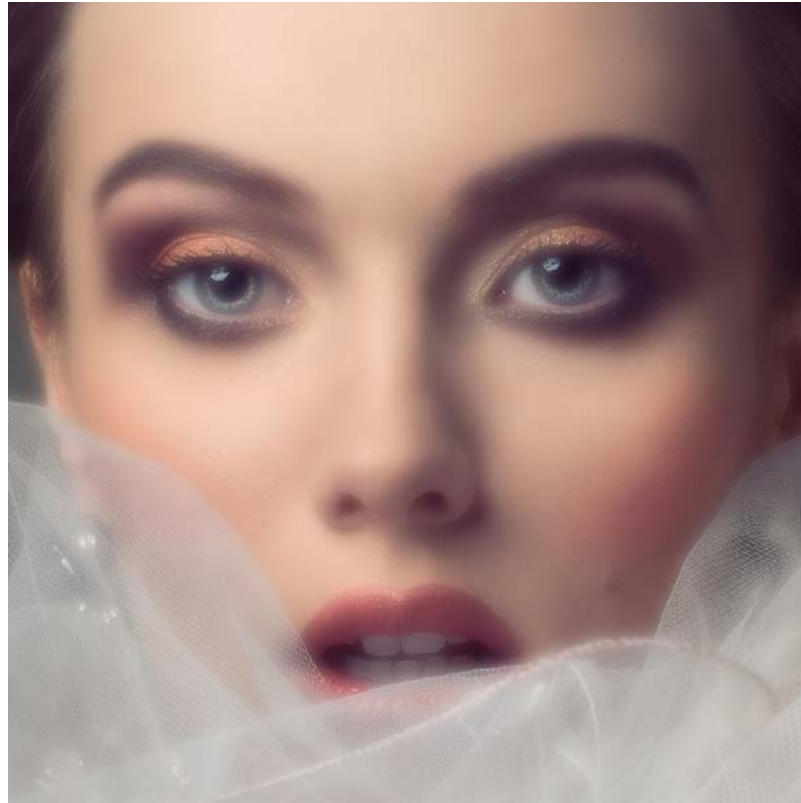
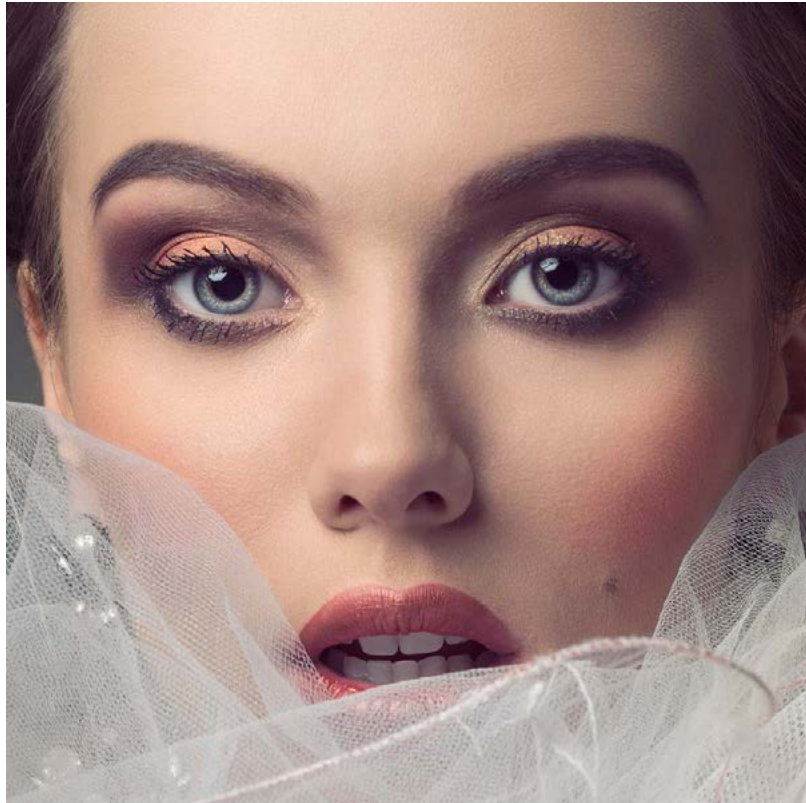


How shown before, flatter curve smooths the image, steeper curve sharp the image. Ok! But what is this for?

What you have seen here is what **happens in a single frequency**. **Wow! does the same job separating five frequencies** plus a base layer.

The result is that **you will be able to smooth specific frequencies, i.e. where the skin imperfections are and sharpen the high frequencies**.

In the Wow! panel, moving the sliders downward you will smooth the image, moving them upwards you will boost the image.





In the next pages you will find more examples but here you may have a rough idea of what frequency separation may allow you. This image has been softened in the frequencies where the imperfection were, boost in the high frequencies, while the local contrast and the blacks has been controlled in the lower frequencies.



*Notes: the frequency separation technique has not been invented by Wow! It's a technique widely used by retouchers worldwide. What innovative in Wow! is not only power speed and precision. Wow! has made this complex technique available to photographers as it works perceptively and you can immediately see the result of your action. Last but not least Wow! is a plugin; this means that he use his own engine and power of calculation and perform actions in a way that Photoshop alone cannot.*

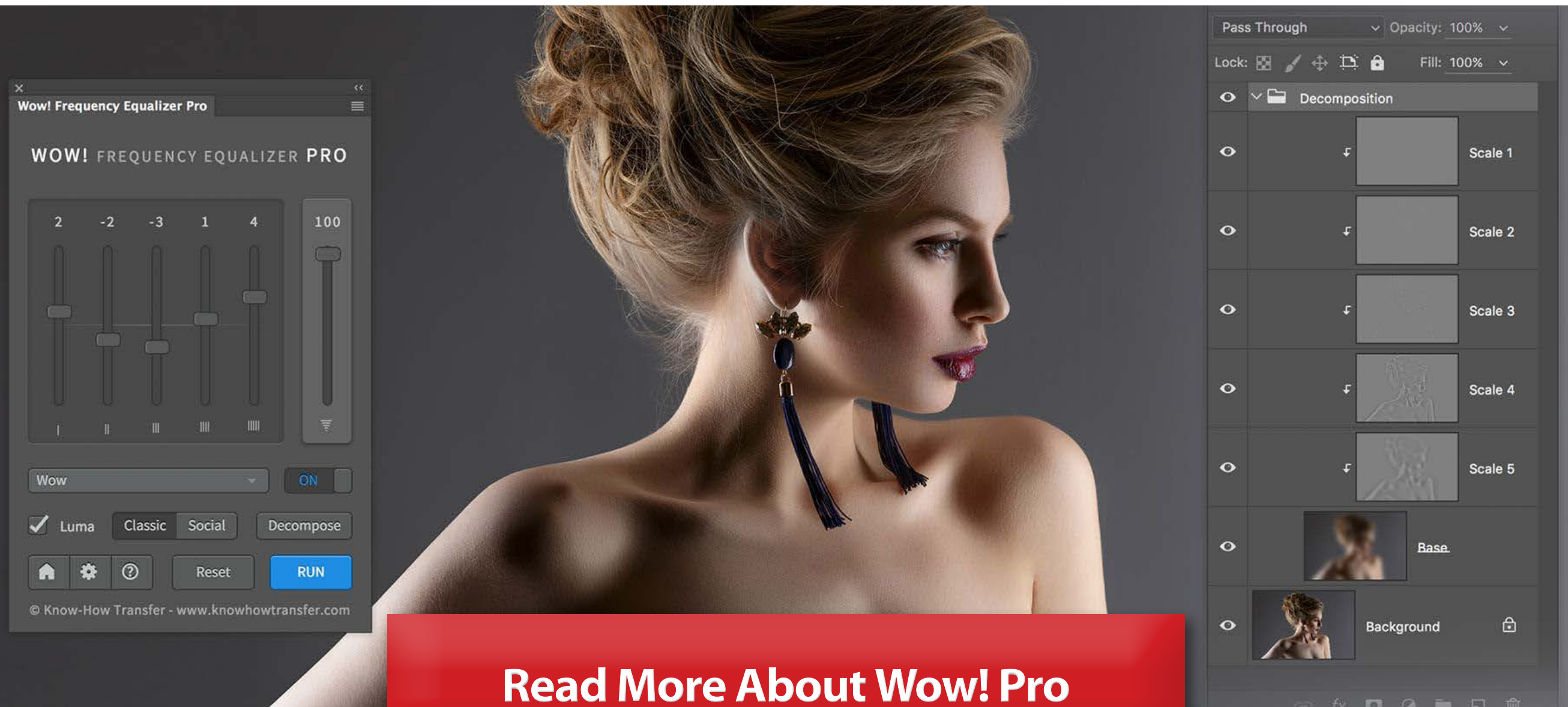


## 9. An introduction to Wow! Pro Edition

We recently added to the Wow! range the Pro Edition with the same features of Wow! Classic Edition plus the “Decompose” button and the double engine “Classic” and “Social” (for Web sized images”

The new Decompose button is a new exciting feature of Wow! Frequency Equalizer Pro. You can now explicitly turn each frequency into its own pixel layer (five of them are created in a stack, plus a base layer) for a better and more precise frequency based retouching.

You can paint, clone and heal on the very exact frequency layer that contains the features you need to target, with great precision, giving you unprecedented control over the retouching process. or write to [support@knowhowtransfer.com](mailto:support@knowhowtransfer.com) >



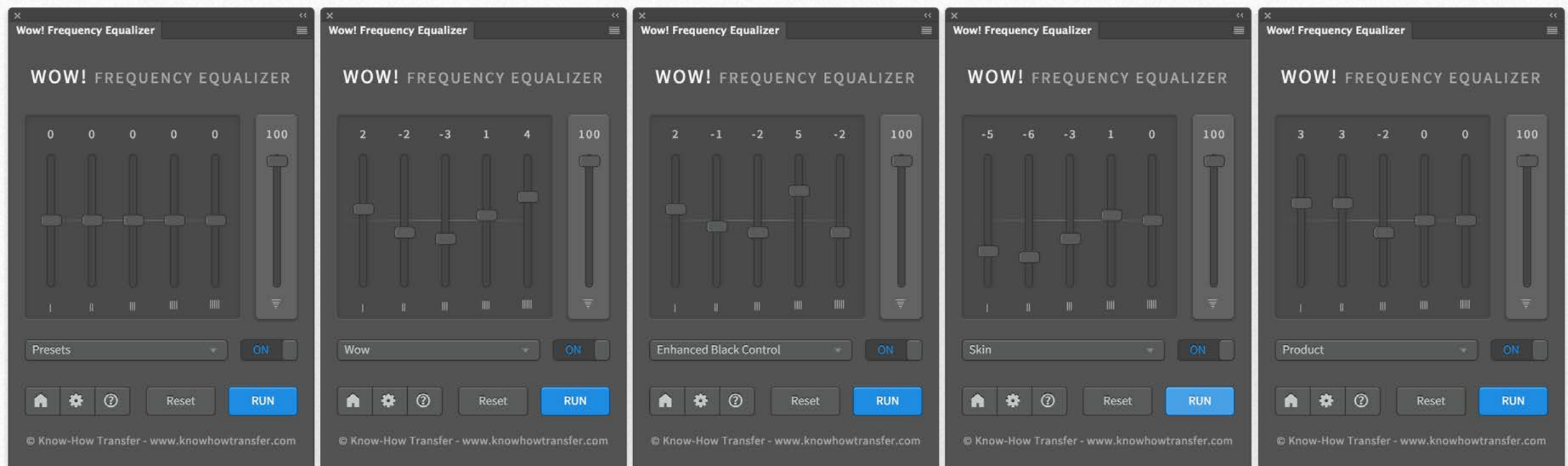


## 10. The Equalizer

Similarly to music equalizer, Wow! allows you to control the tonal values, sharpness and local contrast of your file, working on the higher (finest details), medium or low, (large areas) frequencies.

You can modify positive or negative values. Use positive values (upward) to add sharpness or the local contrast. Use negative values (downward) to smooth the image with a very pleasant result.

Wow! performs its best when mixing positive and negative values, adding a very personal and powerful look to your images, whether the subject is a person, a landscape or a product.



*From left to right. The sliders set to 0, then the four preset: Wow, Enhanced with Black Contro, Skin and Product.*

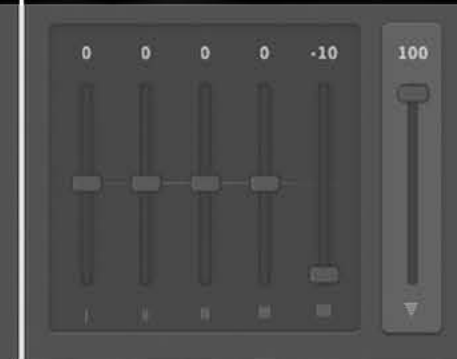
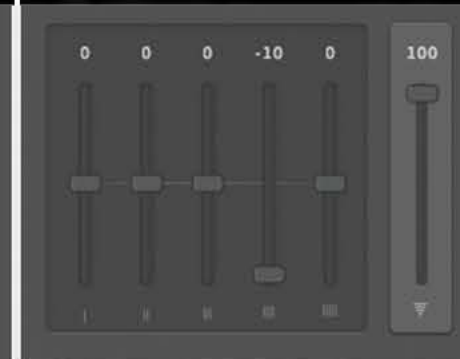
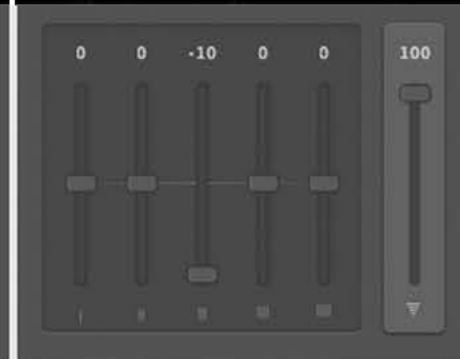
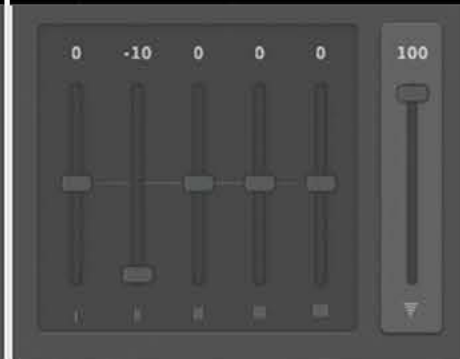
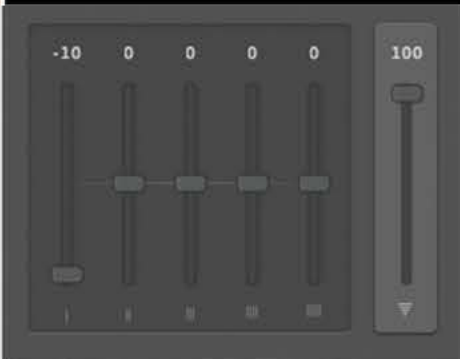
In the next two pages you can see the comparison between the sliders sets at +10 or -10. The upper row illustrates the difference between the original layer and the Wow! one. The lower row the Wow! layers.

The first page shows the positive, the second one the negative. As you can see the slider on the left acts on the finer details. Proceeding to the right the affected areas become progressively larger.







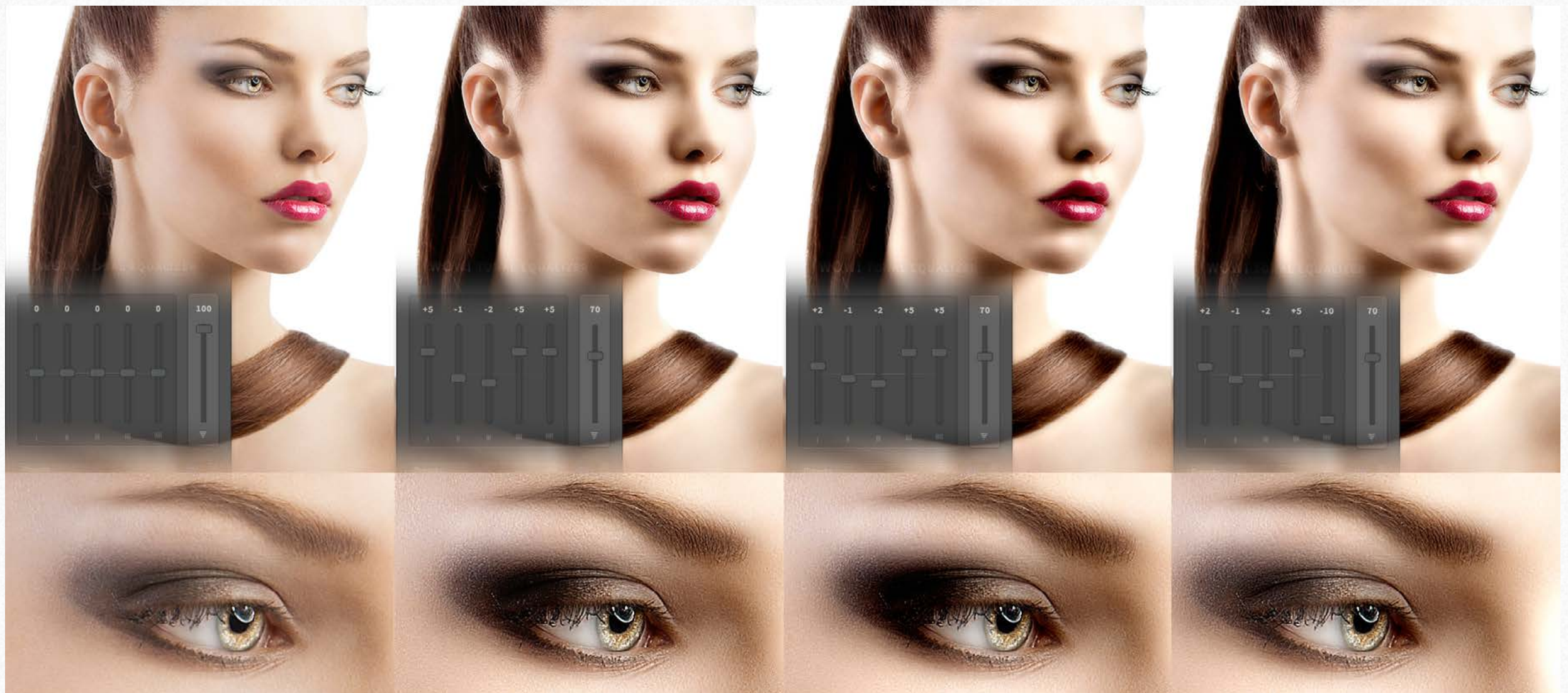




Wow! delivers a high quality full screen live view preview, that remains temporary until you proceed to the next history state.

You can apply a preset or your custom values, check the result, tweak the sliders and run again. Wow will delete the previous version and apply the new one. Each time the layer will be renamed with the used values; for example: WOW! [ +1, 0, 0, +3, +6] 100%.

By default Wow! is applied on the background. We strongly suggest you duplicate the background, work on it and compare the two or more versions, blend two versions using opacity or add a blank (white) mask on the Wow! layer and remove unwanted parts.



From left to right. 1. Original (lack of detail, a bit noisy and flat overall rendition) . 2. WOW! [ +5, -1, -2, +5, +5] 70% too grainy and noisy. 3. same than previous but +2 instead of +5 to the first slider (affecting sharpening detail). 4. Last but not least, the blacks are too deep. There are many options to correct this. Here I placed the fifth slider to -10, add a black mask to recover the blacks detail. Or use WOW! [ +5, -1, -2, +5, -5] to open all the blacks.



## 11. Wow! is file size sensitive

In the next chapter we will approach using presets. Before starting it is important to understand that they are only a starting point and may vary in an impressive way with different subjects and at different file size. Below you can see a comparison with the same values applied at 1000px or 3000px. The sliders were set in both versions at +2, -2, -3, +3, +4. In this case the result with the larger file is much more interesting but, in other cases maybe the opposite. So to get the best from your file apply Wow! only to the final, intended use, file size.

For smaller files we have released “Wow Social Edition” a miniaturized version of Wow! with a re-designed algorithm with shorter range sliders and dedicated preset optimized for sizes from 800 to 1500 px. Works with files up to 1920×1920 px. Both engines, Classic and Social and dedicated presets are available in Wow! Pro Edition.





## 12. Quick and clean: frequency separation according to Wow!

This next pages explains how Wow! works. Like our other tools, Wow! gives you an often excellent starting point simply by picking a preset. You can tweak it at will to reach what is optimal for you. If you need more control, keep Wow! on a separate layer and play with opacity and layer masks. The process is quick: in a couple of minutes, we were able to obtain five different versions.

To compare the versions like in Photoshop layers please watch the pdf at full page and go back and forth using the keyboard left/right keys.





GO BACK AND FORTH  
USING THE ARROW KEYS  
TO COMPARE THE VERSIONS

Wow! Frequency Equalizer

WOW! FREQUENCY EQUALIZER

0

0

0

0

0

I

II

III

IIII

IIIII

100

Presets

ON

Reset

RUN

© Know-How Transfer - [www.knowhowtransfer.com](http://www.knowhowtransfer.com)

Original



GO BACK AND FORTH  
USING THE ARROW KEYS  
TO COMPARE THE VERSIONS



Straight application of the  
preset Wow!  
+2, -2, +3, +1, +4  
No further changes.

**Wow Preset 100%**



GO BACK AND FORTH  
USING THE ARROW KEYS  
TO COMPARE THE VERSIONS

Wow! Frequency Equalizer

WOW! FREQUENCY EQUALIZER

2

-1

-2

-3

6

I

II

III

III

III

100

Gentle

ON

Reset

RUN

© Know-How Transfer - [www.knowhowtransfer.com](http://www.knowhowtransfer.com)



Straight application of the  
preset Gentle  
+2, -1, -2, +3, +6  
No further changes.

Gentle Preset 100%



GO BACK AND FORTH  
USING THE ARROW KEYS  
TO COMPARE THE VERSIONS



Straight application of the  
preset Enhanced Black Control  
+2, -1, -2, +5, -2  
No further changes.

**EBC Preset 100%**



GO BACK AND FORTH  
USING THE ARROW KEYS  
TO COMPARE THE VERSIONS



Straight application of the  
preset Boost  
+2, 0, 0, +3 , +6  
No further changes.

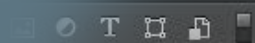
**Boost Preset 100%**



## EBC at 100, 70 and 40%

Don't worry if the effect is too strong. Simply play with opacity adjusting the opacity slider.

For a full control we suggest to apply Wow! on a duplicate layer and change opacity slider as shown below.



Opacity: 45%

minBW - Boost, Neutral, Red

minBW - Boost, Neutral, Red

minBW - Boost, Neutral, Red

minBW - Boost, Neutral, Red

minBW - Boost, Neutral, Red

minBW - Boost, Neutral, Red

minBW - Boost, Neutral, Red

minBW - Boost, Neutral, Red

minBW - Boost, Neutral, Red

minBW - Boost, Neutral, Red

minBW - Boost, Neutral, Red

minBW - Boost, Neutral, Red

minBW - Boost, Neutral, Red

minBW - Boost, Neutral, Red

minBW - Boost, Neutral, Red

minBW - Boost, Neutral, Red

minBW - Boost, Neutral, Red

minBW - Boost, Neutral, Red

minBW - Boost, Neutral, Red

minBW - Boost, Neutral, Red

minBW - Boost, Neutral, Red

minBW - Boost, Neutral, Red

minBW - Boost, Neutral, Red

minBW - Boost, Neutral, Red

minBW - Boost, Neutral, Red

minBW - Boost, Neutral, Red

minBW - Boost, Neutral, Red

minBW - Boost, Neutral, Red

minBW - Boost, Neutral, Red

minBW - Boost, Neutral, Red

minBW - Boost, Neutral, Red

minBW - Boost, Neutral, Red

minBW - Boost, Neutral, Red

minBW - Boost, Neutral, Red

minBW - Boost, Neutral, Red

minBW - Boost, Neutral, Red

minBW - Boost, Neutral, Red

minBW - Boost, Neutral, Red

minBW - Boost, Neutral, Red

minBW - Boost, Neutral, Red

minBW - Boost, Neutral, Red

minBW - Boost, Neutral, Red

minBW - Boost, Neutral, Red

minBW - Boost, Neutral, Red

minBW - Boost, Neutral, Red

minBW - Boost, Neutral, Red



## 13. The “Wow Factor”

Any image is made of fine detail and coarser areas. Controlling these independently is the key to the winning look which has “The Wow! Factor”. How does it work? In the unique Wow! panel, through five dedicated sliders whose values can be either positive or negative you can control separately sharpening, shape and smoothening. Start with one of our presets, and tweak the sliders to reach what is optimal for you. If you need more control, keep Wow! on a separate layer and play with opacity and layer masks.





## 14. The Presets

The new Wow! embeds six new presets designed to meet different requirements. The values are optimized for a mid-size file. Let's say from 3000 to 4500px wide and must be considered a starting point. Some of them, i.e. Wow!, are designed for a straight application, others to be sandwiched. For instance a fantastic combination is Skin+Wow. We strongly invite you to test all the presets with different subjects and play with the sliders. Don't forget to play with the opacity. An effect too harsh at 100% may be perfect at 70%.

### Wow!

[ +2, -2, -3, +1, +4] 100%

It's the basic preset. Simply apply it and often you will get immediately what we call "The Wow! Factor", the magic combination of sharpening and smoothing that helps you add shape and personality to your images.

It's the perfect companion of "Skin".

### Gentle

[ +2, -1, -2, -3, +6] 100%

Typically to be applied at the end of your workflow. It improves the tonal transitions and enhances all details. Great for beauty and portrait in general.

### Skin

[ -5, -6, -3, +1, 0] 100%

It's the smoothing preset, great to correct skin imperfections. You can apply Skin on a first layer and Wow! on a second, add a white mask, grab a soft black brush and reveal all the parts that need to be corrected. A great powerful combination

### Enhanced Black Control

[ +2, -1, -2, +5, -2] 100%

Add a powerful mood to your images. Increase the fourth slider value to enhance the effect, decrease the fifth value to control the black detail.

Pushing the layers values and deforming the image you can get incredible caricature effects.

### Product

[ +3, +3, -2, 0, 0] 100%

A very versatile preset. We could have called it "Landscape" "Birdwatching" or "Automotive". Similar to an high frequency HiRaLoam effect but much more versatile.

### Boost

[ +2, 0, 0, +3, +6] 100%

Add power to your image. Reduce the fifth layer value and add detail to the blacks. Try to add a mask to reduce some parts and eventually play with opacity to reduce artifacts.



## 15. Case History 1&2. Add an exclusive look to an already good image.

Wow may add a magic exclusive look to many images. We call this “the Wow! factor”

We applied Wow to two images already good. In both cases we used the preset “Wow”: [ +2, -2, -3, +1, +4] 100%

To compare the results please view the pdf on full pages and go back and forth using the keyboard left/right keys.





GO BACK AND FORTH  
USING THE ARROW KEYS  
TO COMPARE THE VERSIONS



One of our preferred images.  
We are used to seeing her  
converted with Vitamin BW, and  
in color honestly find her a bit  
ordinary. Let's see if we can get  
something better.

Original



GO BACK AND FORTH  
USING THE ARROW KEYS  
TO COMPARE THE VERSIONS

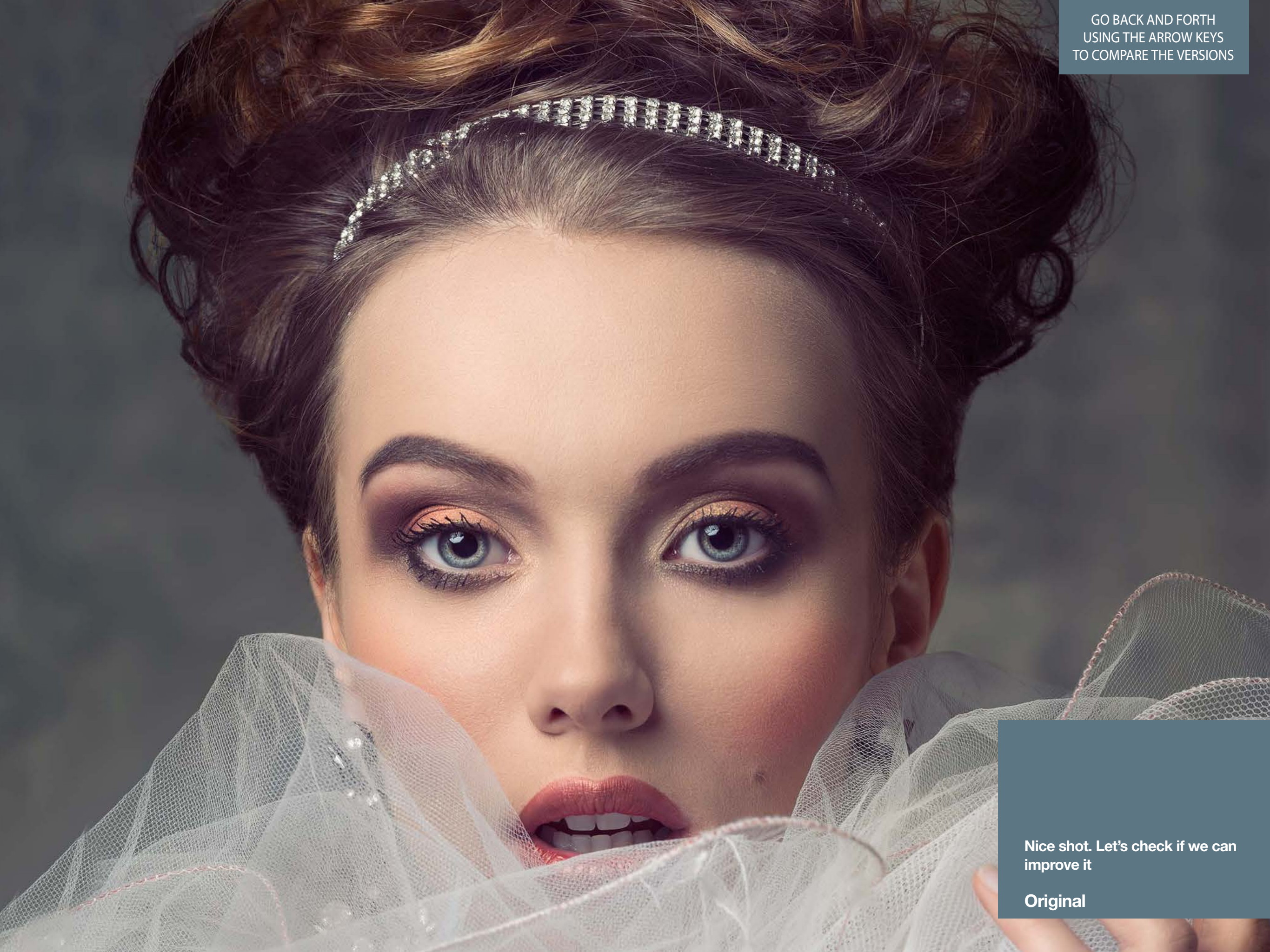


Straight application of the  
preset Wow!

+2, -2, -3, +3, 0



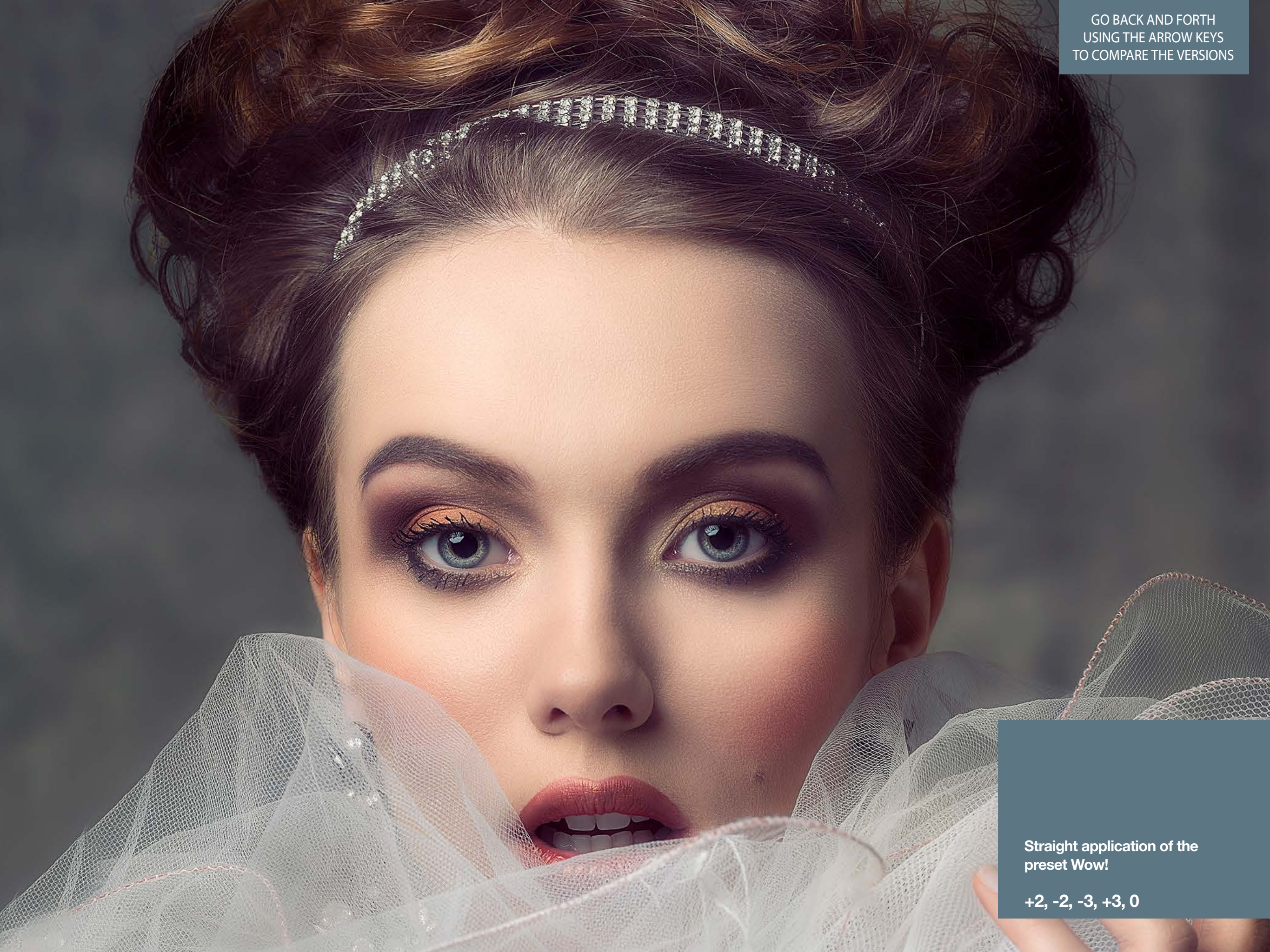
GO BACK AND FORTH  
USING THE ARROW KEYS  
TO COMPARE THE VERSIONS



Nice shot. Let's check if we can  
improve it

Original





GO BACK AND FORTH  
USING THE ARROW KEYS  
TO COMPARE THE VERSIONS

Straight application of the  
preset Wow!

+2, -2, -3, +3, 0



## 16. Case History 3. Improve an image with a lack of mood, contrast and sharpness.

This original image had a lack of contrast and personality. The straight application of the preset “Wow” changed totally the look and the printability of this image.

To compare the results please view the pdf on full pages and go back and forth using the keyboard left/right keys.





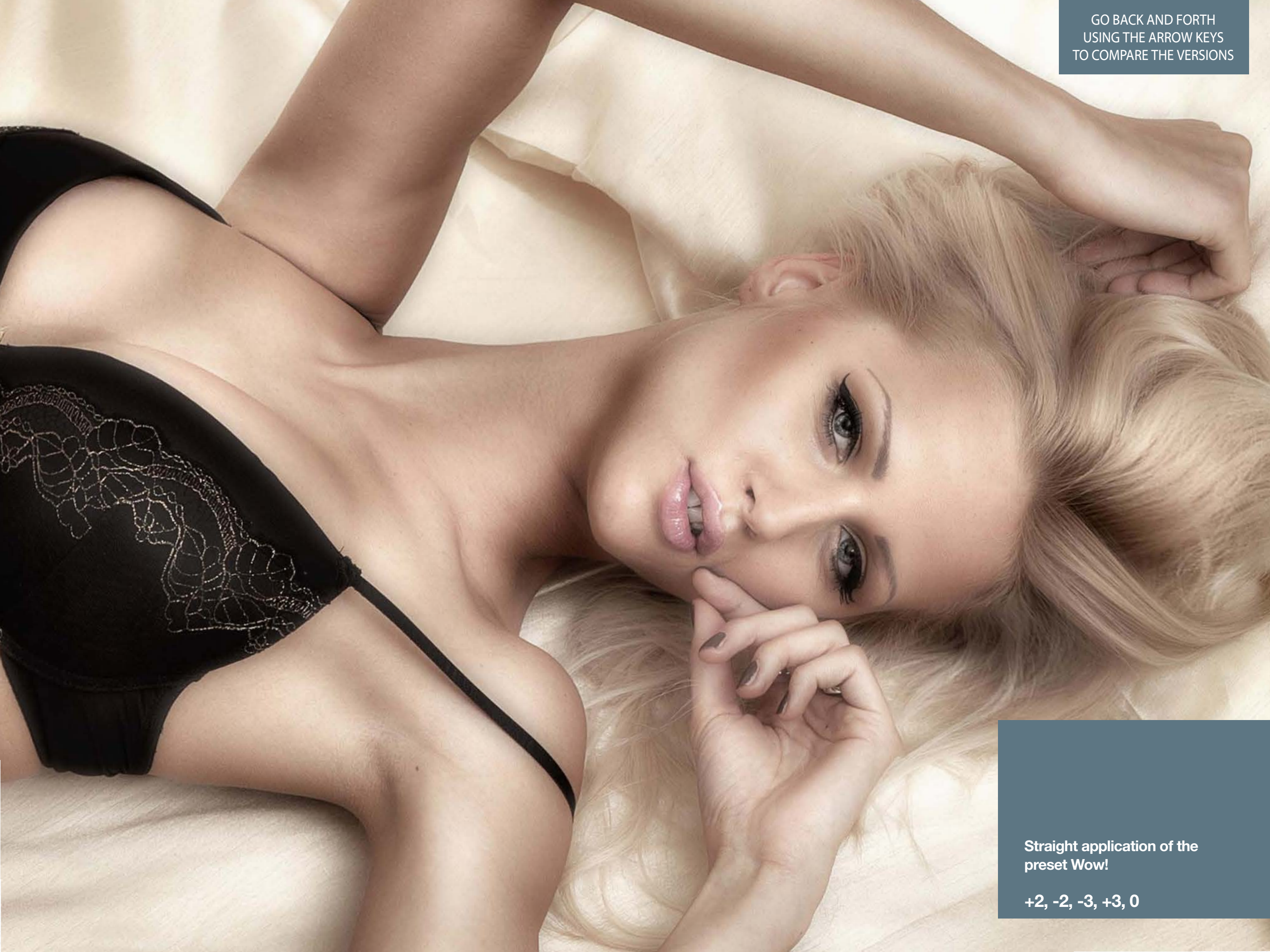
GO BACK AND FORTH  
USING THE ARROW KEYS  
TO COMPARE THE VERSIONS



Original



GO BACK AND FORTH  
USING THE ARROW KEYS  
TO COMPARE THE VERSIONS



Straight application of the  
preset Wow!

+2, -2, -3, +3, 0



## 17. Case History 4. The preset “Gentle”with a typical beauty shot

According to our test all these preset are crossed-setting and if proper used are very good from beauty to wedding, from family portrait to bou-  
doir. Surprisingly they work also very well with most of product (still life) shots.

To compare the results please view the pdf on full pages and go back and forth using the keyboard left/right keys.





GO BACK AND FORTH  
USING THE ARROW KEYS  
TO COMPARE THE VERSIONS



Not easy to enhance this delicate image. We'll try to improve the skin gradations, the hair and the lips. Eyelashes also are a bit confused.

Original



GO BACK AND FORTH  
USING THE ARROW KEYS  
TO COMPARE THE VERSIONS



Although the comparison seems to be less wowing that the previous the image have been improved virtually anywhere. See the next page for comments.

**Preset Gentle 100%**





Better dark and low contrast  
areas with a better printability

Clean and supersharp  
edges enhancing details

Sharper and more  
detailed eyelashes

Smooth transitions with  
very pleasant skin tones

Better teeth surface. nice  
lips. enhanced glittering



## 18. Case History 5. How Wow! deals with skin imperfections.

A nice fresh girl with some problems of skin. With Wow! this retouch was very quick and effective.

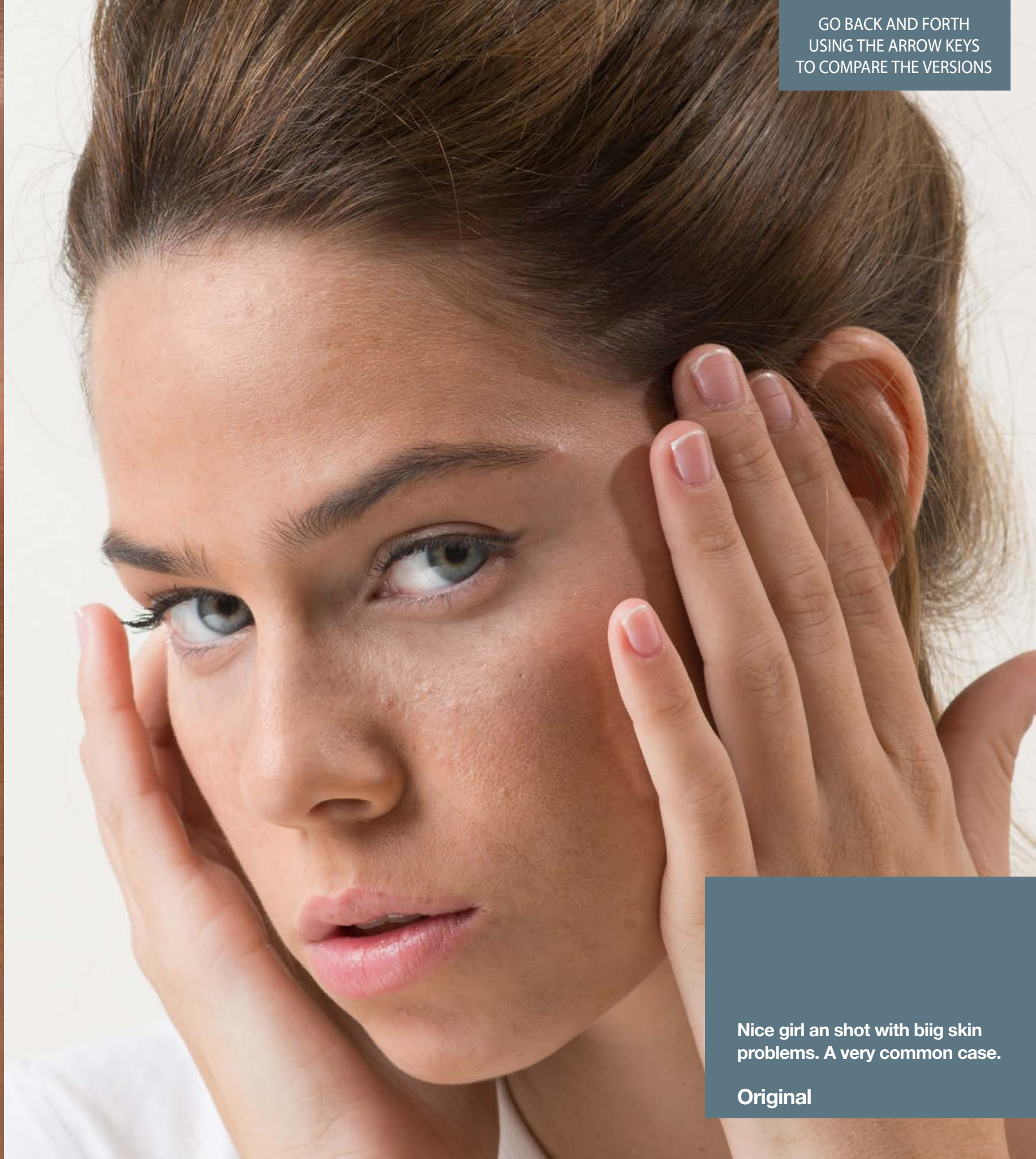
On two copies of the original we applied first the Wow! presets that was great (but some skin issues still remained); on the second we applied the preset "Skin", add a black layer mask, grab a white soft brush and reveal the skin corrected areas.

To compare the results please view the pdf on full pages and go back and forth using the keyboard left/right keys.





GO BACK AND FORTH  
USING THE ARROW KEYS  
TO COMPARE THE VERSIONS



Nice girl an shot with biig skin  
problems. A very common case.

Original



GO BACK AND FORTH  
USING THE ARROW KEYS  
TO COMPARE THE VERSIONS



A sandwich of two layers, the first one with preset “Wow”, the second one with “Skin”. Then added a black mask on “Skin” and reveal the improved skin areas with a black soft brush.

**Wow + Skin**





GO BACK AND FORTH  
USING THE ARROW KEYS  
TO COMPARE THE VERSIONS

The intermediate step

Skin Preset Only



## 19. Case History. Presets “Product” to enhance a still life.

Althought we designed Wow! targeted to work on people it may excel also with product shots, landscape, architecture, birdwatching. Watch the preset “Product” applied to a Gitzo Catalog image, adding sharpness and depth and a great improvement of printability. To compare the results please view the pdf on full pages and go back and forth using the keyboard left/right keys.





GO BACK AND FORTH  
USING THE ARROW KEYS  
TO COMPARE THE VERSIONS



Original



GO BACK AND FORTH  
USING THE ARROW KEYS  
TO COMPARE THE VERSIONS



Boost Preset 100%

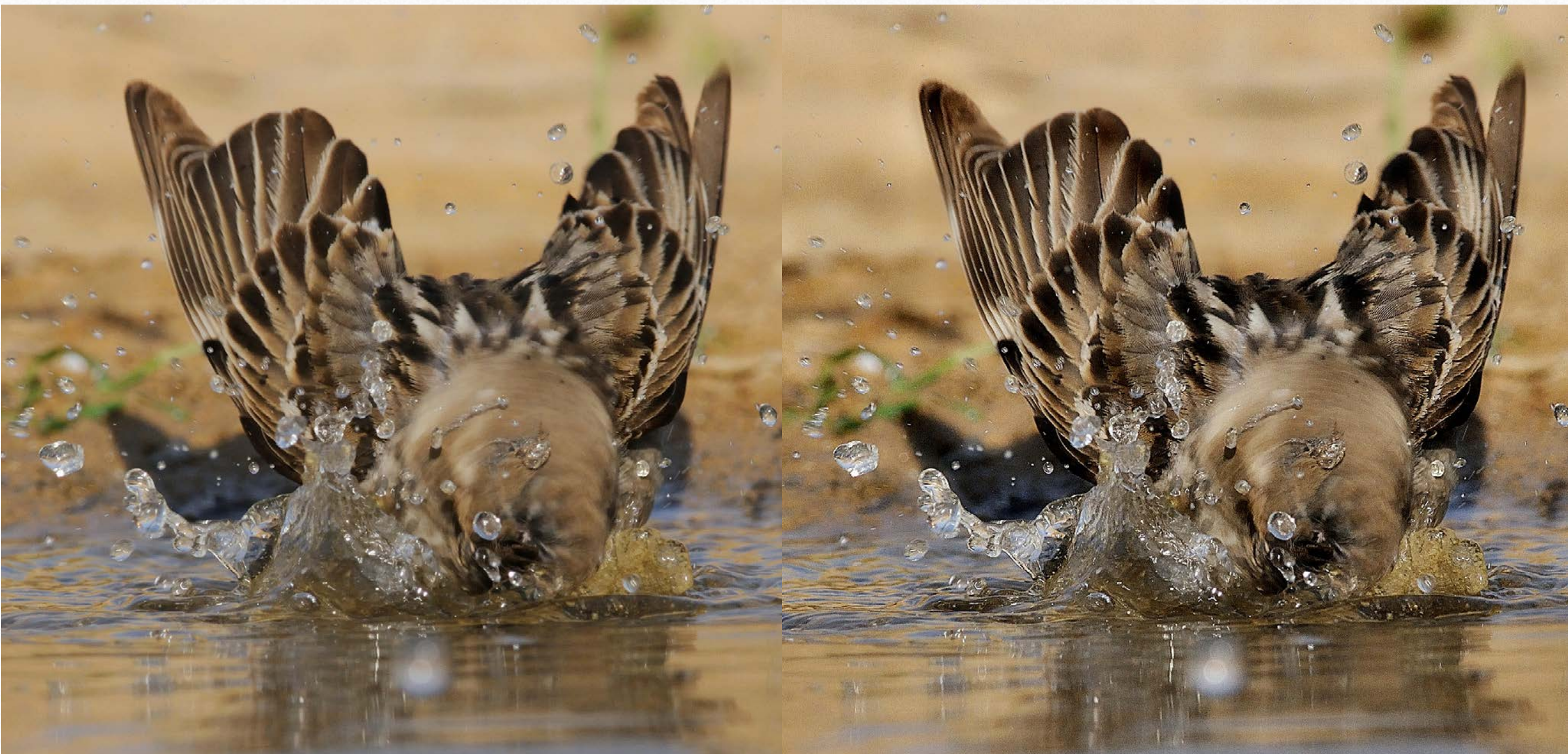


## 20. Case History 7. Birdwatching.

The preset “Product” is designed to add sharpening and local contrast adding a smoothing effect with the slider N.3.

In this case a great tri-dimensional effect has been added.

To compare the results please view the pdf on full pages and go back and forth using the keyboard left/right keys.





GO BACK AND FORTH  
USING THE ARROW KEYS  
TO COMPARE THE VERSIONS



Original



GO BACK AND FORTH  
USING THE ARROW KEYS  
TO COMPARE THE VERSIONS



Product Preset 100%



## 21. Case History 8. Preset “Boost” with landscape.

The original image, taken with an Hasselblad digitally speaking is really very good. The problem is that, printing it, many subtle tones, of similar colors are not properly rendered. The preset “Boost” added a stunning detail greatly improving the print. To really appreciate the difference we are showing a full size detail. If the result should be too harsh, simply reduce the opacity.

To compare the results please view the pdf on full pages and go back and forth using the keyboard left/right keys.





GO BACK AND FORTH  
USING THE ARROW KEYS  
TO COMPARE THE VERSIONS



Original



GO BACK AND FORTH  
USING THE ARROW KEYS  
TO COMPARE THE VERSIONS



**Boost Preset 100%**





# KNOW HOW TRANSFER

the photography knowledge hub

## Know-How Transfer – The Photography Knowledge Hub

A new platform by the same team who developed ALCE, formerly RBG Group or Bigano and associates.

Everyone dealing with photography and digital imaging will find a unique mix of instructional and how-to content here. We offer applications specifically designed by photographers for photographers, as well as effective tutorials and free resources. Our mission is to create a community, a Central Hub of Photography Knowledge, where photographers can exchange experiences, share information and grow their skills. [Read more about our team here >](#)

Many of them come from the school of the great Dan Margulis and still have a very special relationship with him. I'm pleased to report here what he wrote about this group taken from his famous post "La Dolce Vita - An era ends":

*They say that Italians get emotional at times like this, and that Italians love beautiful things. I admit to feeling a bit Italian myself as I write this. I \*have\* developed an emotional attachment to the country, no doubt. And the relationships I have entered into with several of my students in that country have evolved into something, well, profoundly loving. The old joke has it that in heaven, all lovers are Italian. Right off-hand I can think of a couple of exceptions to this generality, but there is no need to go off-topic. The truth is that it is a land of love and great beauty, made all the more beautiful professionally by seeing the new and sophisticated imaging algorithms being developed by Davide with Marco Olivotto, and by seeing how Alessandro, Daniele Di Stanio, Tiziano Fruet and others have brought first-class color instruction into a country where it was rarely found previously.*



## Freeware



### Floating Adjustments

Restore the Old CS3 Style Floating Window

*Floating Adjustments - Restores the old CS3 floating window*

Restores the Adjustment Layers' bigger, floating windows look and behaviour which was the norm back in CS3. It allows the creation of 10 Adjustment kinds as big, floating windows, and the modifications of existing adj.

PS cc 2015, CC2014, CC, CS6 - MAC & WIN.

[Get Free >](#)



### False Profile

Luminosity Control Using Gamma

*False Profile - Tonal range control with low or high gamma*

A Photoshop extension to automate the assignment of false RGB profiles for a full control of the luminosity. Brings new features and refinements to the process of assigning false profiles. Works in conjunction with the Dan Margulis' PPW Tools.

PS CC 2015, CC2014, CC, CS6, CS5 - MAC & WIN.

[Get Free >](#)

## Premium Raw Scan Service



### Hasselblad 3F 16bit Raw Scan

The Best Service on the Market. For your Analog Workflow

*Hasselblad 3F 16bit Raw Scan Service*

3F is a raw file obtained from an analog original. We will scan your film with the Hasselblad hi-end scanners. Send us your originals from a 35mm to a 13x18cm/5x7", color or black and white, negative or positive. All PS Versions, MAC & WIN. Buy 3F 16 bit R

ALL PHOTOSHOP VERSIONS, MAC & WIN

[Buy Raw Scan €7 each.>](#)

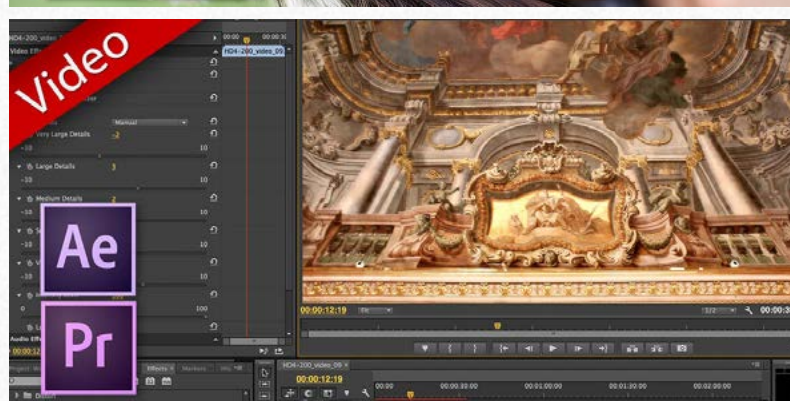
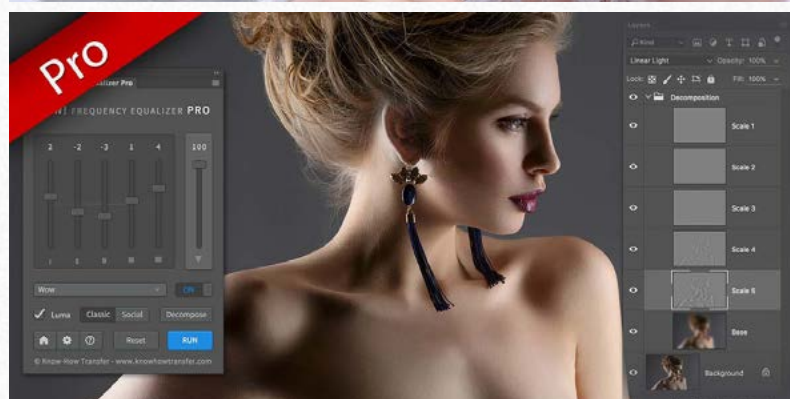
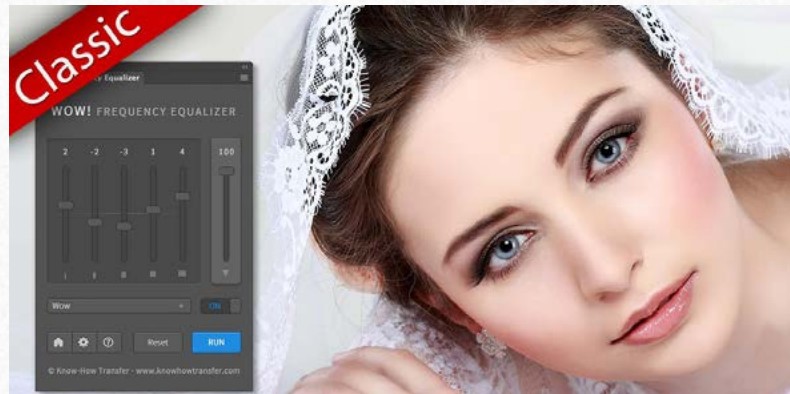
[Apps Store >](#)

[Apps home page >](#)



# The Wow! Range. Classic, Pro, Social and Video Edition

[Go to Wow! Home Page>](#)



Wow! is an exclusive Photoshop extension that improves images with a magical combination of sharpening, shape and smoothing – we call this the “The Wow! Factor.”

Wow! adds style, image sharpness and three-dimensionality together with incredibly smooth transitions. Use our easy presets with just one button, or take full control with the high quality live preview to add and remove details by tweaking our five dedicated sliders.

There are four versions of Wow!, three for Photoshop and one for video. All the versions work with the same principle.

## **Wow! Frequency Equalizer Classic Edition**

Our Premium Frequency separation Plugin. Five detail scales working independently with positive (add contrast sharpening and local contrast) and negative (remove contrast and smooth) values.

PS CS6 and above MAC & WIN. **Buy €30>**

## **Wow! Frequency Equalizer Pro Edition**

Same features of Wow! Classic plus the new Decomposition button You can now turn each frequency into its own pixel layer for a better and more precise frequency based retouching.

Works with two different engines: Classic and Social

PS CC and above - MAC & WIN. **Buy 40>**

## **Wow! Frequency Equalizer Social Edition**

A miniaturized version of Wow! Classic with a re-designed algorithm with shorter range sliders and dedicated presets optimized for sizes from 800 to 1500 px. **Works with files up to 1920×1920 px**

PS CC and above MAC & WIN. **Buy 15>**

## **Wow! Frequency Equalizer Video Edition for Adobe Premiere and After Effects**

Works with the same powerful engine of Wow! Classic. Same ease of use and tuning effect. Wow! generates an instant video preview and the export process his very fast. It's easy to use.

PS After Effects and Premiere CS6 and above - MAC & WIN. **Buy €25>**

## **Specifications for all versions**

Works on 8,16 and 32bit files - New wavelet based algorithm - Multi CPU accelerated.

Modern CPU optimized code compatible with SSE4 and later - 32bit color depth internal processing.





# KNOW HOW TRANSFER

the photography knowledge hub

## Links and Credits

Wow Frequency Equalizer Classic Edition © knowhowtransfer.com / bigano srl  
Plugin developed by KnowHowTransfer  
GUI Panel Design by Davide Barranca  
Manual design by Marco Diodato

[Wow! Frequency Equalizer Page >](#)  
[Buy Wow! here >](#)  
[Store Home Page >](#)  
[Products Home Page >](#)  
[bigano.com >](#)

Images credits: cover: ©Pandorabox- depositphotos.com / Page 3, ©Uri Avitan / Page 3, 46 to 49 53 to 56 446 to 49 53 to 56; @ Denis Komarov - Adobestock ©depositphotos.com / Pandorabox - Page 19 / ©Irina Gromovataya - depositphotos.com / page 20 32/34 and 21/29: Vitaly Valua / page 15, 20, 26, 27: ©depositphotos.com / Page 16, 18, 38, 39 Carlo Dapino, ©depositphotos.com / Page 37/38 and 40/43: Pawel Sierak, depositphotos.com / Page 51, 52, 56, 57, 58: Roberto Bigano